

2016 MASTERPIECES

A high-contrast, black and white photograph showing a hand at the bottom left, palm up, releasing a large, billowing cloud of fine particles or dust that rises and spreads towards the top right. The background is solid black, making the white particles stand out.

FROM MATERIAL TO MASTERPIECE

THINK
BRICK
AWARDS
2016

WELCOME



This year marks a decade of the Think Brick Awards. Over time, the program has celebrated clay brick and evolved to also include concrete masonry and roof tiles. In 2016 we have seen a tremendous increase in participation – the number of entries has again surpassed the previous year.

In 2016 our theme is “Transcendence.” This focuses on the journey that roof tiles, bricks, blocks and pavers take from their beginnings as a humble material to becoming part of a beautiful architectural masterpiece.

The influence of architects who have pioneered different applications of masonry and roof tiles is evident in this year’s entries. Many architects and landscape architects in our pool of finalists have taken inspiration from these pioneers, interpreting styles and materials in new ways.

While masonry is commonly seen as a material for exterior applications, this year we have also seen it used innovatively as part of a project’s interior design. This showcases the versatility and increasing appeal of masonry, as well as the skill of the designers in using the material across a variety of project types and scales.

Our Roof Tile Excellence Award has been renamed after Robin Dods, who was one of

Australia’s most renowned architects. Dods’ architectural designs embraced sustainability and climate responsiveness. He favoured large roof designs containing a considerable volume of air, which helped to insulate his buildings and provide thermal comfort. By ventilating the roof space, and planning for aspect and cross ventilation, his designs offer insulation as well as the sustainability benefits of energy efficiency. This approach is consistent with the sustainability and thermal mass qualities of masonry.

Above all, this year’s entries emphasize the prominence of collaboration between architect, manufacturer and craftspeople to produce art in the form of outstanding architecture. Such collaboration is vital to the success of a project and is at the core of what the Think Brick Awards are all about.

Thank you for taking the journey from material to masterpiece and participating in this year’s awards.

ELIZABETH MCINTYRE
Group CEO, Think Brick
Australia, The Concrete Masonry
Association of Australia & Roofing
Tile Association of Australia

CONTENTS

2	Welcome
3	Horbury Hunt Commercial Award
15	Horbury Hunt Residential Award
27	Kevin Borland Masonry Award
38	2016 Jury
39	Bruce Mackenzie Landscape Award
50	Horbury Hunt Commercial Award Entrants Index
50	Horbury Hunt Residential Award Entrants Index
51	Robin Dods Terracotta Roof Award
62	Horbury Hunt Residential Award Entrants Index (continued)
62	Kevin Borland Masonry Award Entrants Index
62	Bruce Mackenzie Landscape Award Entrants Index
63	Robin Dods Terracotta Roof Award Entrants Index
64	Member Companies

HORBURY HUNT COMMERCIAL AWARD

This award was initiated by the Horbury Hunt Club and by request from architects and designers. The award’s purpose is to honour innovation and craftsmanship in brickwork and recognize the contribution of architects, builders, bricklayers and manufacturers in that process.

The Horbury Hunt Commercial Award category includes built projects that exemplify outstanding craftsmanship and innovation through the use of clay face brick and pavers.

The award is named after John Horbury Hunt, a renowned architect who came to Australia from America in 1863. Hunt was known for introducing his distinctive and radical architecture to Sydney and rural New South Wales, including St Peter’s Anglican Cathedral in Armidale, and Convent of the Sacred Heart and Tivoli in Rose Bay.



Think Brick Australia represents Australia’s clay brick and paver manufacturers.

Think Brick’s purpose is to ensure clay brick is recognized as a pre-eminent building material by leading architects, developers, builders and property owners.

We are committed to promoting exemplary building and landscape design using clay bricks and pavers.

We create national campaigns to inspire designers, builders and consumers to use clay brick as a contemporary, versatile and inspiring building material.

WINNER

 Brendan Homan

HORBURY HUNT COMMERCIAL AWARD

HORBURY HUNT COMMERCIAL AWARD

THINK BRICK AWARDS 2016

ANTICA PIZZERIA E CUCINA

GENESIN STUDIO

The brief for this project was to create a modern Italian restaurant in the heart of Adelaide – the second restaurant for owner Anthony Crea. Design inspiration was drawn from Crea's Italian heritage; in Napoli, old gated streets, private piazzas and vaulted spaces are laid with brick and stone. The hard finishes in Antica Pizzeria e Cucina have been designed with acoustically engineered ceilings to counterbalance sound reverberation in the space.

The project features bricks finished with a full grouted mortar join. The repetition of several brick patterns, fluted half-cut bricks, and hand-bolstered, wet-sawn and hand-cut tiled facia bricks create a monolithic and poetic space. The patterns have been applied to vaulted ceilings, floors, bench seats, planters and general walls that sculpt the interior. These brick detail combinations play with light and shadow and add visual interest, while creating a feeling of nostalgia for old Italy.

"THIS STANDOUT PROJECT SUCCESSFULLY MANIPULATES BRICK IN A NUMBER OF WAYS TO CREATE A STRIKING, NUANCED RESTAURANT. TRADITIONAL ARCHITECTURAL ELEMENTS SUCH AS SKIRTING AND ARCHITRAVES HAVE BEEN BEAUTIFULLY REIMAGINED WITH THE SKILFUL USE OF BRICK."

– 2016 JURY

MANUFACTURER Austral Bricks BRICK COLLECTION Austral Bricks / Bowral Bricks / Simmental Silver PROJECT BUILDER Antica PROJECT CONTRACTOR Antica

FINALIST

AUSTRALIAN BALLET SCHOOL

MGS ARCHITECTS

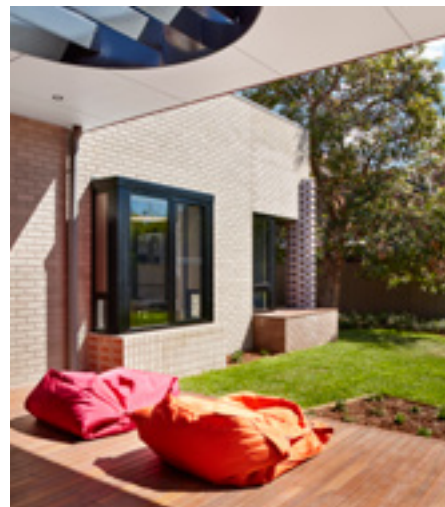
The student residence for the Australian Ballet School is a delicate single-storey addition to a grand old dame in Parkville, Melbourne. The design respects the existing bold brick and terracotta building that it is tucked behind, while also offering elements of fresh character and playfulness. The residence provides shared living spaces for up to twenty-five ballet students of various ages.

The addition is largely concealed from the street, the entry only apparent as a slight splitting of the facade. The exterior is modest in tone and domestic in nature but also highly active. Pre-formed brick shapes along the perimeter were developed through a series of parametric studies and evoke the form and movement of dance.

"FEATURING A DELIGHTFUL ARRAY OF PRE-FORMED BRICK SHAPES AND GRACEFULLY REFERENCING THE MOVEMENT OF DANCE, THIS STUDENT RESIDENCE IS SIMPLY DIFFERENT."

— 2016 JURY

MANUFACTURER Bowral Bricks BRICK COLLECTION Bowral Bricks /
Simmental Silver PROJECT BUILDER Ireland Brown PROJECT
CONTRACTOR DT Commercial



FINALIST

C3 GALLERY

FOLK ARCHITECTS

The c3 Gallery entry is an expressive brick installation in Melbourne's historic Abbotsford Convent. It draws inspiration from the gallery's existing barrel-vaulted brick arches and stretcher-bond brick flooring, and celebrates the convent's distinctive architectural features in its formal composition.

Composed of radiating bricks, the installation consists of three intersecting volumes, each with a unique function and brick pattern.

The volumes are interconnected and structurally self-supporting, and provide a table, bar and reception desk.

While generating intrigue, the installation is also considerate of its historic context and role as part of an exhibition space. Subdued Chillingham White bricks were selected so as not to compete with the art, while the patterns and forms demonstrate the versatility of brick.

"THIS PLAYFUL BRICK INSTALLATION CREATIVELY BALANCES A RESPECT FOR HISTORY WITH BOLD NEW IDEAS AND IMPRESSIVE FUNCTIONALITY."

— 2016 JURY

MANUFACTURER Austral Bricks BRICK COLLECTION Bowral Bricks /
Charolais Cream PROJECT BUILDER Mogford & Glenn Bricklaying
PROJECT CONTRACTOR Mogford & Glenn Bricklaying



FINALIST

SYDNEY 385

SMART DESIGN STUDIO

This seemingly simple multi-residential building gradually reveals a series of unique ideas that combine to create a satisfying whole. Brick is key to this outcome; used with off-form concrete, it gives the project its public identity. The masonry palette respects its surrounds, creating a link with the existing environment. A pattern of openings and two-storey voids creates a contemporary look while controlling privacy and sunlight, framing views and enhancing the quality of the interiors.

Slender leaves of facade brick have been carefully designed, engineered and built to create the full brick lintels in a rowlock coursing over each aperture, matched in the sills below. Each brick is set out to avoid cutting and has been laid with flush perpend and 10-mm raked joints. In combination with a colour-matched mortar, this detailing adds elegance and refinement to the building.

"BRICK HAS BEEN USED ON THIS MULTI-RESIDENTIAL BUILDING TO CARVE VOIDS AND OPENINGS THAT NOT ONLY ENHANCE THE QUALITY OF THE INTERIOR, BUT ALSO OFFER A UNIQUE AND APPEALING FACADE."

— 2016 JURY

MANUFACTURER Austral Bricks BRICK COLLECTION Bowral Bricks / Simmental Silver PROJECT BUILDER Growthbuilt PROJECT CONTRACTOR Better Brick Service



FINALIST

SALTWATER COMMUNITY CENTRE

CROXON RAMSAY

The form and materiality of the Saltwater Community Centre in Melbourne's Point Cook reference the adjacent wetlands and coastal context. A ribbon of undulating brickwork forms the two main street facades, echoing the windswept sand berms sheltering the facility.

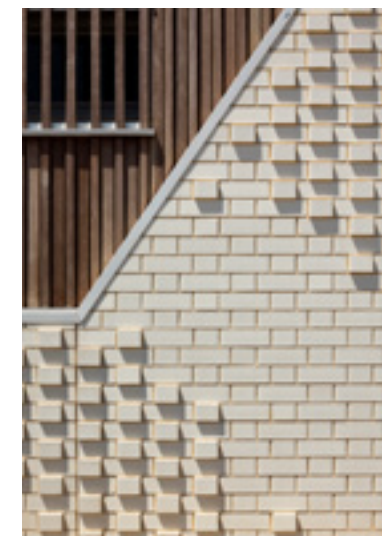
Artwork has been integrated into the project to heighten the sentiment of the brickwork ribbon, which peels away to form entries, and

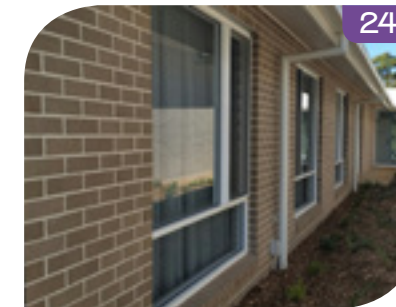
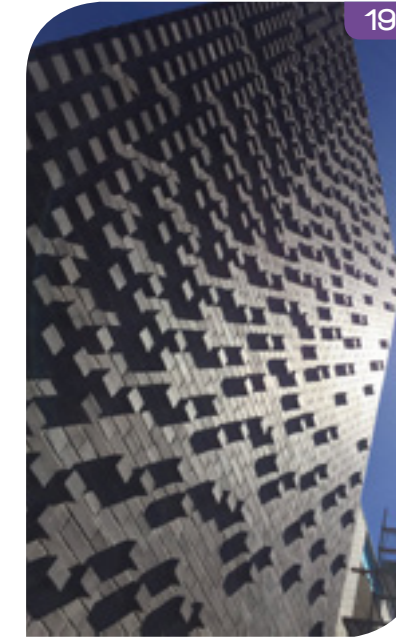
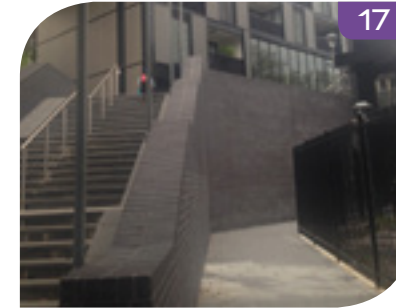
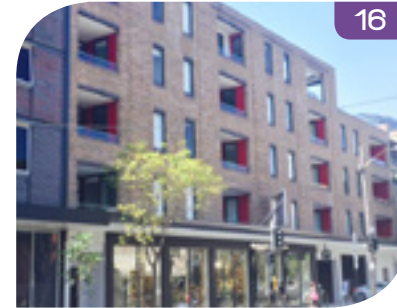
curls internally to embrace the main circulation space. The commissioned artwork *Undulating*, by visual artist Louise Lavarack, presents an image of shifting tidal sands defined by relief in the brickwork's Flemish bond. The gentle cream of the extruded clay bricks conceals the image, until daylight and deep shadow are cast on the walls, enabling the artwork to be seen.

"THE RESTRAINT AND SUBTLETY USED IN THE DESIGN OF THE UNDULATING BRICK FORMS HAS RESULTED IN A FACILITY THAT OFFERS MORE THAN FIRST MEETS THE EYE."

— 2016 JURY

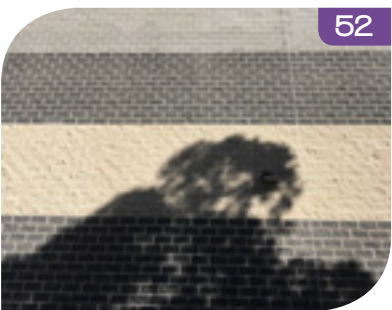
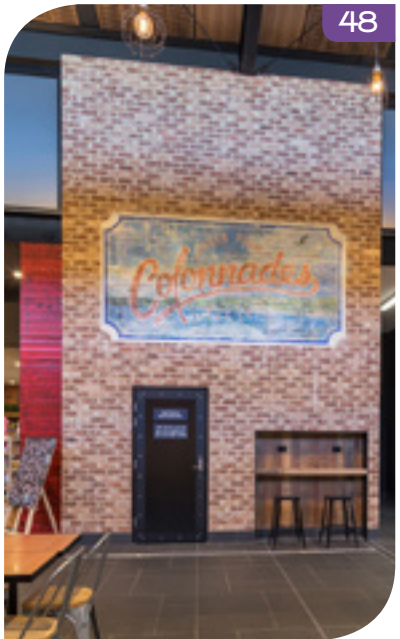
MANUFACTURER Austral Bricks BRICK COLLECTION Colourbrick / La Palma PROJECT BUILDER Melbcon PROJECT CONTRACTOR Lawler Bricklaying





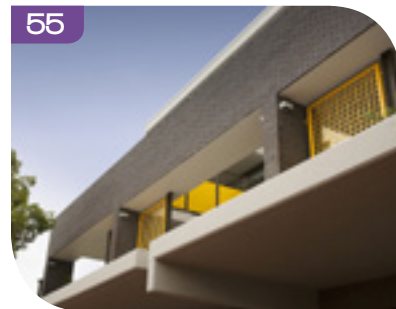
01: ABC Brick Sales Headquarters *Hooker Design* 02: Mordialloc Preschool *Hede Architects* 03: Olympic Park Community Facilities Collingwood Football Club *Croxon Ramsey* 04: Jimmy Grants Richmond *March Studio* 05: Station 2A *Olsson & Associates Architects* 06: Belmont Police Station *Gardner Wetherill & Associates* 07: Jarrett St Coffs Harbour *Harvey Designer Homes* 08: Eddystone Nursing Home *McNully Architects* 09: Cass *Calder Flower Architects* 10: Dynasty Apartments *CBM Venture* 11: Allity Greenwood *GSA Architects* 12: Pittwood Village Nursing Home *Cant Dibden* 13: Rutherford Technology High School *EJE* 14: Trinity Grammar Aquatic Centre *Gardner Wetherill + Associates* 15: Washington Park *Turner Studio*

16: Edge Ultimo *Revay & Unn* 17: Harbour Mill Project *Grimshaw Architects* 18: 19 Wandoo Street *Richards & Spence* 19: The Barcelona Guida *Moseley Brown Architects* 20: Our Lady of the Angels Church *De Angelis Taylor and Associates* 21: Benedict XVI Retreat *Michael Suttie & Partners & Sidney Rofe Architect* 22: Knox Grammar – Knox Senior Study Academy *JSA Studio* 23: Butler Apartments *DP Toscano Architects* 24: Bupa Aged Care Toowoomba *Jackson Teece* 25: Northpoint Shopping Centre *Cottee Parker Architects* 26: Hawkesbury Multidisciplinary Clinical School, University of Notre Dame *Martin & Ollmann* 27: Gunners Cottages, Fremantle *Griffiths Architects* 28: Kirk Apartments Seniors Independent Living Units, Burwood *Architects Contempo* 29: Blacktown Mount Druitt Hospital New Clinical Services Building *Jacobs*



30: Mt Pleasant Primary School *Kneeler Design* 31: Arundel Urbanest Student Accommodation *Antoniades Architects* 32: The Cooperage *Jackson Teece* 33: Ruby Tower *Popov Bass* 34: Salisbury East High School Performing Arts Centre *Russell & Yelland Architects* 35: Park Raphael *JCB Architects* 36: Salisbury Command Fire Station *Walterbrooke Architects* 37: Erko Apartments *SJB Architects* 38: Sullivan Nicolaides Queensland Office *Nettleton Tribe*

39: DHA Lindfield – Hamilton Corner *Bates Smart* 40: The Corner Store *LXN Architecture* 41: Wentworth Point Apartment *Turner Studio* 42: City West Housing, Zetland *Kann Finch Group* 43: Casino Aboriginal Medical Service *Kevin O'Brien Architects* 44: IRT Woodlands *Brad Read Design Group* 45: Killara Multi Residential *Aleksandar Design Group* 46: Shirley Lane *Fieldwork Projects* 47: Parklife Apartments *Aspire Homes* 48: Colonnades *The Buchan Group* 49: Rosanna Green *Romano Property Group* 50: Aquinas College *Davenport Campbell* 51: Emmanuel Christian School *Luttrell Pyefinch* 52: Powerhouse Museum *JPA&D*



HORBURY HUNT RESIDENTIAL AWARD

This award was initiated by the Horbury Hunt Club and by request from architects and designers. Its purpose is to reward innovation and craftsmanship in brickwork and to recognize the contribution of architects, builders, bricklayers and manufacturers in that process.

The Horbury Hunt Residential Award category includes residential built projects that exemplify outstanding craftsmanship and innovation through the use of clay face brick and pavers.

The award is named after John Horbury Hunt, a renowned architect who came to Australia from America in 1863. Hunt was known for introducing his distinctive and radical architecture to Sydney and rural New South Wales, including St Peter's Anglican Cathedral in Armidale, and Convent of the Sacred Heart and Tivoli in Rose Bay.



Think Brick provides technical support to architects, engineers, builders, developers and property owners.

We undertake research to improve and promote the usability and environmental credentials of our products and work with government and regulators closely. We also set and monitor standards for our members and users of our products.

We provide resources for the industry and assist with the development of training initiatives for associated trades.

53: The Kooyong *Ewert Leaf* 54: The Brighton Retirement Community *Campbell Luscombe Architects* 55: Albany Highway Development *Klopper & Davis Architects* 56: The Coppel & Piekarski Family Disability Respite Centre *Jackson Clements Burrows Architects* 57: CQU Health Clinic Extension *Reddog Architects* 58: Howrah Primary Kindergarten *Liminal Studio* 59: St Thomas More College, NRAS Accommodation *Cox Howlett & Bailey Woodland* 60: John Paul II College *Collins Caddaye Architects* 61: WSU Parramatta Early Learning Centre *JDH Architects* 62: Klemzig Stepping Stone (SA) Childcare and Early Development Centre *Eastern Building Group* 63: The Whitfield *John L Silbert & Associates*

WINNER
+ GRAND
PRIX
WINNER



APPLECROSS HOUSE

IREDALE PEDERSEN HOOK

The clients wanted a building that would endure time, and evoke a sense of permanence and of belonging to its site. Using brick to achieve this was a natural choice.

pushing and pulling of protective brick walls. Light and views are filtered through brick screens and light is bounced from reflective brick on deep reveals.

Sited on the edge of the Swan River with views to the city of Perth, the house has been designed to offer an experiential connection with the fluid and dynamic body of water.

The brick mass is simultaneously heavy and light; one storey is hung from the upper level and the cranked columns on the east boundary. Brick patterning slips and slides, creating a sense of movement.

The street is revealed through the

"THE BOLD AND CLEVER USE OF BRICK HAS PRODUCED A ROBUST HOME THAT ENABLES A FLUID CONNECTION WITH ITS SITE WHILE OFFERING A PLEASURABLE PLACE TO DWELL."

— 2016 JURY

MANUFACTURER Austral Bricks **BRICK COLLECTION** Elements / Zinc
PROJECT BUILDER John McCowan (owner/builder) PROJECT
CONTRACTOR Tyrone Group

FINALIST

CARR PLACE
RESIDENCE

KLOPPER & DAVIS ARCHITECTS

This four-bedroom home on an inner-city block was created for a young urban family. The texture and warmth of the bold masonry bedroom wing reference the industrial and urban site context. Open and glazed living spaces contrast well with the dark and brooding masonry box.

The form of the masonry box is broken at the entry to allow filtered views to the living spaces,

creating a breezeway element that is a centrepiece of the house. The internal walls continue the face brick, creating a dark textured backdrop to the master suite.

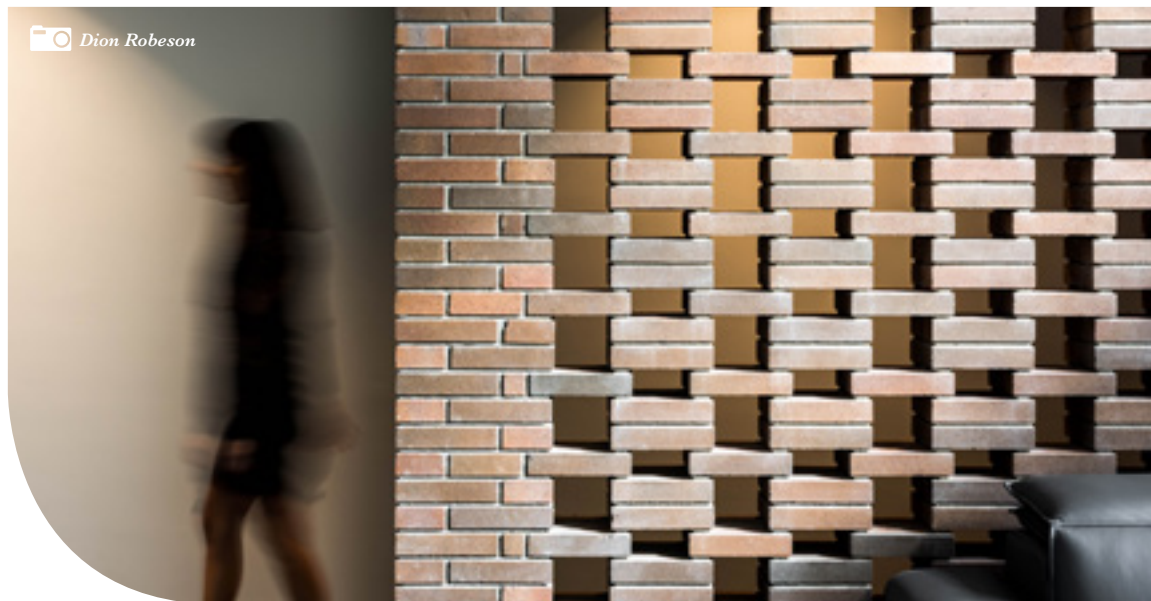
This dark masonry box continues up to a roof deck, where city and urban views can be enjoyed. A sculptural stair form leads to the top floor, which forms a striking crest to this small urban development.

"WITH A BEAUTIFUL BREEZEWAY FEATURE WALL AS A STANDOUT ELEMENT, THIS INNER-CITY HOME EMBODIES GRAPHIC CREATIVE EXPRESSION, REFINED MATERIALITY AND UNIQUE CHARACTER."

— 2016 JURY

MANUFACTURER Austral Bricks **BRICK COLLECTION** Bowral Bricks / Gertrudis Brown **PROJECT BUILDER** JD & KE Wigham **PROJECT CONTRACTOR** Gary Wood & John Darwin

HORBURY HUNT RESIDENTIAL AWARD



Dion Robeson

HORBURY HUNT RESIDENTIAL AWARD

NARANGA
AVENUE HOUSE

JAMES RUSSELL ARCHITECT

Located in a 1960s canal estate on the Gold Coast, this home is an ideal setting for contemporary living, offering protected indoor and outdoor spaces. Featuring extruded brick on edge and a screen that provides protection from the sun and rain, this permeable dwelling is a place that's private and secure.

The initial meeting with the clients took place on the beach – a perfect way to start discussions about the site, living on the coast and how the clients wanted to live. What has resulted is a refined design with a shell that offers the occupants protection from adverse weather while allowing them to enjoy coastal Australian living.

"INCREDIBLY SEDUCTIVE, THIS CRISP, BRIGHT HOME USES A PERMEABLE BRICK SCREEN TO CREATE AMBIGUITY BETWEEN INSIDE AND OUT, LETTING IN THE COASTAL BREEZE WHILE ALSO OFFERING PRIVACY AND PROTECTION."

— 2016 JURY

MANUFACTURER Austral Bricks **BRICK COLLECTION** Colourbrick – La Palma **PROJECT BUILDER** Owner builder **PROJECT CONTRACTOR** Gold Coast Bricklaying

THINK BRICK AWARDS 2016

FINALIST



FINALIST

YtH
RESIDENCE

SCOTT CARVER

YtH Residence has been rebuilt from the ground up and connected into the neighbouring terrace to create a courtyard house offering adaptable multi-family living.

The home's facade, built entirely in face brick, responds to the rhythm of the street yet sits in contrast to its neighbours. The new terrace transitions in height between the adjoining three-storey terraces and a row of single-storey terraces

that typify the conservation zones throughout inner Sydney. The resulting exposed party wall is expressed in decorative brickwork, with a pattern made by stepped brick soldiers that are rotated to create a vertical ribbed surface. The pattern, which appears to change with moving sunlight and shadow throughout the day, was initially inspired by experiments in robotic construction.

"BUILT ENTIRELY IN FACE BRICK, THIS HOME'S FACADE IS A SOPHISTICATED RESPONSE TO THE EXISTING STREETScape THAT DEMONSTRATES THE BEAUTY, QUALITY AND POSSIBILITIES OF THE MATERIAL."

— 2016 JURY

MANUFACTURER Austral Bricks BRICK COLLECTION Bowral Bricks – Bowral Blue / Burlesque – Indulgent White PROJECT BUILDER White Wolf Constructions PROJECT CONTRACTOR NDG Bricklaying



📷 Rodney Paesler



📷 Richard Glover



📷 Richard Glover

CARLTON
CLOISTER

MRTN ARCHITECTS

Carlton Cloister connects a Victorian terrace house with a two-storey pavilion addition at its rear. The immersive brick corridor link not only offers additional living, playing and working spaces along its length, but is also a pleasure to pass through. The link is imagined as a cloister – a covered walkway with garden connections.

The brick pattern along the corridor's floor is varied to give the impression of small rooms

strung along a circulation path. It is built from red brick and blackbutt cladding, materials that are more closely aligned to external spaces than interior ones. These material choices enhance both the cloister and outdoor aspects of the connection. The brick wall and floor provide thermal mass that is harnessed by the north-facing glazing to passively heat the house during winter.

"THIS IMPRESSIVE BRICK CIRCULATION CORRIDOR THOUGHTFULLY RESPONDS TO SITE, RESPECTS THE VALUE OF THE GARDEN AND PROVIDES FLEXIBILITY AND THERMAL MASS FOR MODERN FAMILY LIVING."

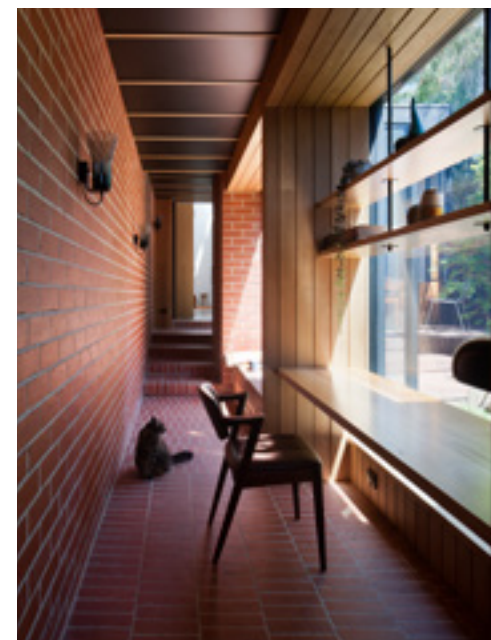
— 2016 JURY

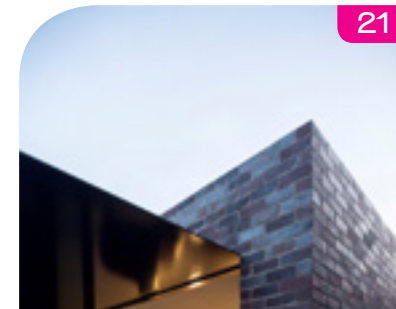
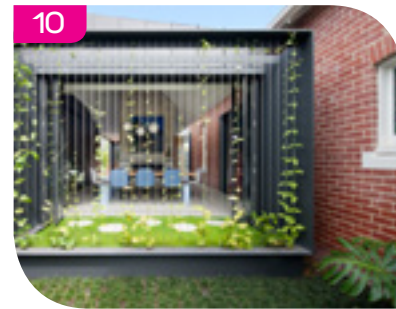
MANUFACTURER Nubrik BRICK COLLECTION Nubrik Classic 230 / Chapel Red PROJECT BUILDER Technique Constructions PROJECT CONTRACTOR Technique Constructions

FINALIST



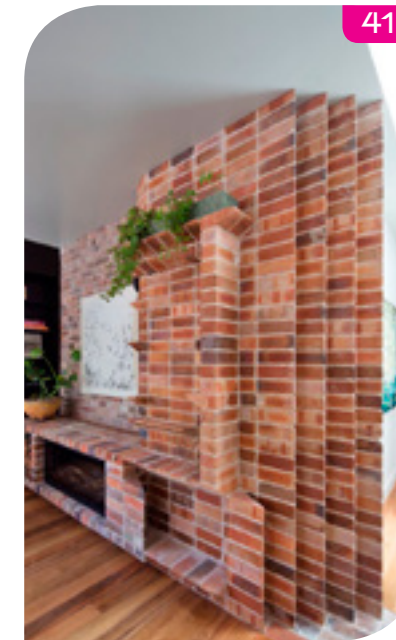
📷 Shamon McGrath





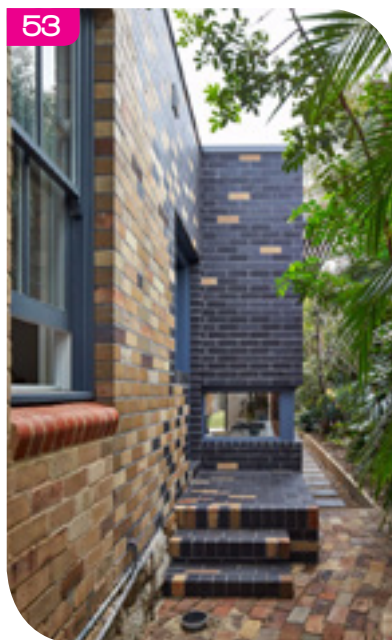
01: Buena Vista **Shaun Lockyer Architects** 02: Rosalie House **Owen Architecture** 03: Integrity New Homes Korora Display **Integrity New Homes** 04: Brad Acheson Display Home **Brad Acheson Homes** 05: D House **Marston Architects** 06: Better Built Homes **Better Built Homes** 07: Vogue Homes **Vogue Homes** 08: Diamantina Designer **Diamantina Designer Homes** 09: Berringa Rd Park Orchards **Latitude 37** 10: Shadow House **Matt Gibson Architecture + Design** 11: Bardon Garden House **Arcke** 12: Goulburn Valley House **Rob Kennon Architects** 13: Country House **Austin Design** 14: The Kite **Architecture Architecture** 15: AT Courtyard House, St Helena **Mary Traitsis**

16: Waratah Bay **Hayne Wadley Architecture** 17: Kate's House **Bower Architecture** 18: Double Courtyard House **Stuart Vokes** 19: Down Size Up Size House **Carterwilliamson Architects** 20: Guest House **LS Design Construct** 21: Llewellyn House **studioplusthree** 22: Hip & Gable **Architecture Architecture** 23: Claremont Residence **David Barr Architect** 24: Kworbenare **Cunningham Custom Homes**



25: Carwoola House **Paul Barnett Design Group** 26: Gremmo Homes **Gremmo Homes** 27: Elias House **Harmer Architecture** 28: Frazer House **Logan Studio** 29: The Substation **S.Group** 30: The Brick House **Hall Bowra Architects** 31: Winston Hills Residence **Opra Architects** 32: Brennan House **Schriek Building Group** 33: Lees House **Rob Kennon Architects**

34: Toorak Gardens Residence **Chasecrowns Homes** 35: Aldgate Residence, Adelaide Hills **Aura Prestige Homes** 36: Tandarook House **37: Drury Street House Marc and Co** 38: Milovan Cres **RL Building Constructions** 39: Toowoomba House **Schriek Building Group** 40: Doris St **Spaces Design Group** 41: 2 Semi's Camperdown **David Boyle Architect** 42: Queens Park Re-purposed Federation **POC+P Architects** 43: Indigo Slam **Smart Design Studio** 44: Country Living **Caruso Constructions** 45: Abercrombie **Tim Stewart Architects** 46: Que Court Riverside **RD Homes** 47: Salter Como Project **George Yermeyev and Associates**



KEVIN BORLAND MASONRY AWARD

The Kevin Borland Masonry Award recognizes projects that highlight the design potential of concrete masonry in commercial or residential built architecture.

Kevin Borland (1926–2000) was an innovative architect, a generous patron of younger architects, and an inspiring and much-loved design studio teacher.

After beginning his architectural studies at the University of Melbourne in 1944, Borland deferred to serve in the West Pacific in World War II. On returning, he completed his studies and graduated with a Bachelor of Architecture in 1950.

Borland's early projects demonstrate his love of structural and formal innovation in architecture. After working at Mockridge Stahle & Mitchell's office, Borland, together with friends Peter McIntyre and John and Phyllis Murphy, won the national competition to design the Melbourne swimming and diving stadium for the 1956 Summer Olympics.

In 1955, Borland commenced his lengthy architectural teaching career at the Royal Melbourne Technical College. He was a popular design teacher in all three Victorian architecture schools over the next three decades. Together with his former student and friend Daryl Jackson, Borland completed the design and construction of the distinguished brutalist Harold Holt Memorial Swimming Centre (1968–1969) in Melbourne's Glen Iris.

During a time when peer awards were far less common than they are today, Borland's designs received numerous awards from state chapters of the Royal Australian Institute of Architects. His work made a significant contribution to the trajectory of Melbourne architecture.



The Concrete Masonry Association of Australia (CMAA) is the peak body that represents the concrete masonry manufacturers of Australia. This includes bricks, blocks, pavers and retaining walls.

The CMAA supports the concrete masonry industry by providing technical information and advice to architects, engineers, specifiers and educators.

The CMAA publishes technical manuals, data sheets and software packages relating to concrete block walling, concrete paving, permeable paving and concrete masonry retaining walls, which are free to download from the CMAA's website.

The Association also conducts workshop courses and provides a technical advisory service for masonry design queries.

48: Bal Harbour *Shane Denman Architects* 49: Aston Milan *Rochedale Display* 50: Carroll Street Residence *Esplanade Homes* 51: Clarence Houses *Rob Kennon Architects* 52: Kingfisher House *Josephine Hurley Architecture* 53: Step Down House *Bijl Architecture* 54: Kingsway St Nedlands *Artique Homes* 55: Camp Hill Terrace *Dan Young Landscape Architect*

WINNER



HODDLE HOUSE

FREADMAN WHITE

Hoddle House is an alteration and addition to an existing 1930s brick dwelling and a 1970s addition. The clients required additional space for their children – the existing residence would contain the bedroom wing and a new rear addition would provide living areas.

On first impressions, the solidity of the new addition references the brick dwelling that it is connected to. However, sheer curtaining coupled

with variegated window heights and depths blurs this static formalism.

While the street is textured with weatherboard, brick and stucco single dwellings and apartments, a common feature is the hipped roof. In this addition, the exterior form is hidden from view – it is not until you are inside that the angular forms of the hip roof type appear, in the form of dramatically raking ceilings.

"THIS ELEGANT PROJECT IS A BRILLIANT CELEBRATION OF MASONRY BRICK, ITS TOUGH YET VELVETY, SHIMMERING FORM PLAYING WITH SCALES AND PROPORTIONS TO PRESENT AN UNOBTUSIVE YET CONFIDENT ADDITION."

– 2016 JURY

MANUFACTURER Adbri Masonry MASONRY COLLECTION Architectural Masonry / Architectural Brick PROJECT BUILDER Feddersen

FINALIST

TRENTHAM HOUSE

ADAM KANE ARCHITECTS

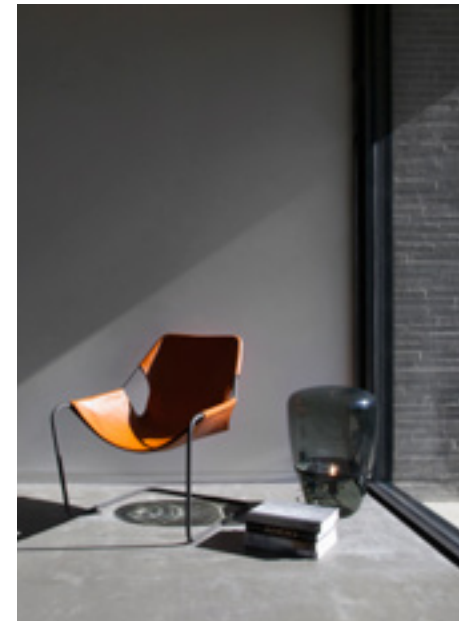
The Trentham House's concrete and masonry extension was designed to contrast with an existing 1890s weatherboard home while maximizing natural light to the new spaces. The addition consists of solid and glazed vertical planes sandwiched between horizontal floor and roof planes.

The materiality of the facade creates a sense of permanence and solidity. The neutral colour palette enhances the garden while not competing with the pale blue finish of the existing home.

Concrete pavers were sawn lengthwise to produce a "brick" that is longer and thinner than traditional bricks. The slender proportions contribute to the horizontality of the modern extension while also referencing the period home's weatherboards. The bricks, laid in a random set-out, were washed with a slurry of white mortar to soften their appearance.

"A STRONG PERFORMER IN THE RESIDENTIAL CATEGORY, THIS FRIENDLY EXTENSION TO AN 1890s WEATHERBOARD HOME SHOWS WHAT CAN BE ACHIEVED WITH CLEVER USE OF CONCRETE PAVERS."
— 2016 JURY

MANUFACTURER National Masonry MASONRY COLLECTION Arianapave concrete paver 390x190x40 "Charcoal" PROJECT BUILDER Hardwick Build Co. PROJECT CONTRACTOR Brett Smartt Bricklaying



FINALIST

PALING COURT RESIDENTIAL AGED CARE FACILITY

JACKSON TEECE

Paling Court is a residential aged-care facility for Carrington Care in Camden, Sydney. It houses 126 rooms with associated back-of-house facilities and a basement car park. The design provides a "deinstitutionalized" aged-care environment, where views of the surroundings are maximized and spaces enjoy ample natural light.

The materials palette is consistent with the local urban morphology and contributes to the facility's domestic aesthetic. Concrete blocks

were selected for both the external facade and the internal finishes in the public spaces. Dark block defines the private residential rooms while a lighter block was used for the public areas and two spines of the building. The concrete blocks reference the freestanding masonry houses in the area and have depth in their materiality. The blocks were laid in full- and half-height courses, creating a visual rhythm throughout the building.

"WHILE A LARGE FACILITY, PALING COURT USES CONCRETE BLOCK TO SUCCESSFULLY PROVIDE AN ENVIRONMENT WITH A PLEASANT, HOMEY CHARACTER, OFFERING ABUNDANT NATURAL LIGHT, CROSS-VENTILATION AND ENGAGING VIEWS."
— 2016 JURY

MANUFACTURER Austral Masonry MASONRY COLLECTION GB Honed / Pewter PROJECT BUILDER Grindley PROJECT CONTRACTOR JR Block Brick Laying



FINALIST

SHAMBLES
BREWERY

ROOM 11 ARCHITECTS

Shambles Brewery was created by a group of mates who dreamt of beautiful craft beer. The architects were briefed to “spend any money leftover from brewing equipment” on a fitout. The fitout needed to be robust, and a tough, simple palette of block and black paint was a natural choice.

Tables are set adjacent to the main bar and in front of a concrete hearth. A service core features a clever screen of fenestrated blockwork that creates light play

within the interior. Protruding from this wall, cantilevered core filled 20.01 blocks perform the role of small tables, waiting expectantly for glasses of beer.

Beyond the core space, the shiny stainless steel machinations of brewing are showcased against a gritty blockwork frame. This composition creates a textured backdrop for a monumental communal table upon a stack bond blockwork plinth.

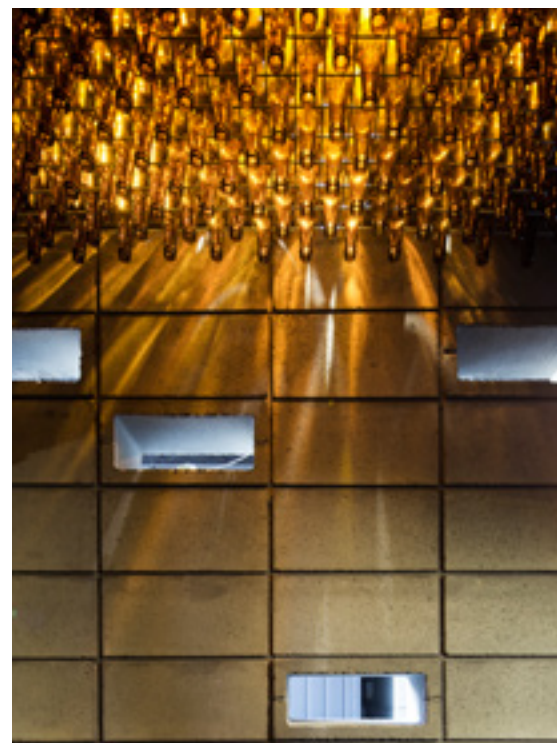
“BLOCKWORK IS USED SKILFULLY AND IMAGINATIVELY THROUGHOUT THIS REMARKABLE PROJECT, SUCH AS THE CUTE LITTLE TABLES PROTRUDING FROM A WALL.”

— 2016 JURY

MANUFACTURER Adbri Masonry MASONRY COLLECTION Architectural Masonry / Smooth Stone PROJECT BUILDER Elevate Building Group
PROJECT CONTRACTOR All Brick



Ben Hosking / Andrew Knott

HIDING
HOUSE

JACKSON CLEMENTS BURROWS

Located on a unique battle-axe block among eleven neighbours, Hiding House is a simple two-storey courtyard home characterized by a balance of program, built form and landscape.

With three distinct yet linked garden spaces, the home features sliding glazed walls to the ground-floor living rooms. These allow constant layered connections between internal and external spaces so that sitting in the house is like sitting in the garden.

The materials palette is reductive, natural and robust, featuring off-

white concrete bricks, concrete floors, white-stained cladding and naturally oiled timber. The simplicity and rawness of the palette celebrates the process of making. Cost-effective and sustainable design moves and an honest expression of structure combine to enhance the quality of the interior.

This home is immersed in its landscape, offering a peaceful living space and engaging in an evolving dialogue with nature.

“GARDEN SPACES ARE STRATEGICALLY PLACED SO THAT BOUNDARIES BETWEEN INDOORS AND OUTDOORS ARE DELIGHTFULLY BLURRED – THE ROBUST PALETTE OF CONCRETE AND TIMBER CELEBRATES THESE CONNECTIONS AND THE PROCESS OF MAKING.”

— 2016 JURY

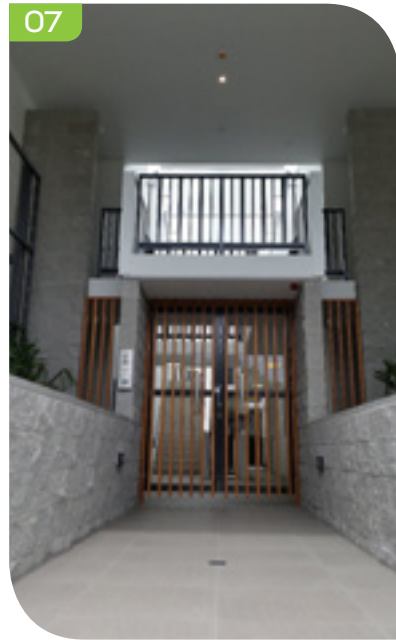
MANUFACTURER Selkirk Masonry MASONRY COLLECTION Off-white concrete brick PROJECT BUILDER BD Projects

FINALIST



2016 MASTERPIECES

Full entries can be viewed online at cmaa.com.au



01: Marsfield Residence *Di Veroli Architects* 02: Schlich Home *Turco and Associates* 03: No.17 Danks *SJB* 04: Settlers Rise House *Smith Services Mackay* 05: Mundy Street Townhouse *Padarc* 06: Burleigh Project *Total Vision Design* 07: View St Units *Aspect Architecture* 08: One 33 Scarborough *Hamilton Hayes Henderson Architects* 09: Toowoomba City Library *Peddle Thorp Architects* 10: High Street Showrooms *Peninsula Architects* 11: Forest Hill Police Station *Bamford Architecture* 12: Pacific Fair Shopping Centre Alterations and Additions *Scentre Design & Construction (Westfield)* 13: Athana Residence *Arche Design Services*

KEVIN BORLAND MASONRY AWARD

KEVIN BORLAND MASONRY AWARD

Full entries can be viewed online at cmaa.com.au

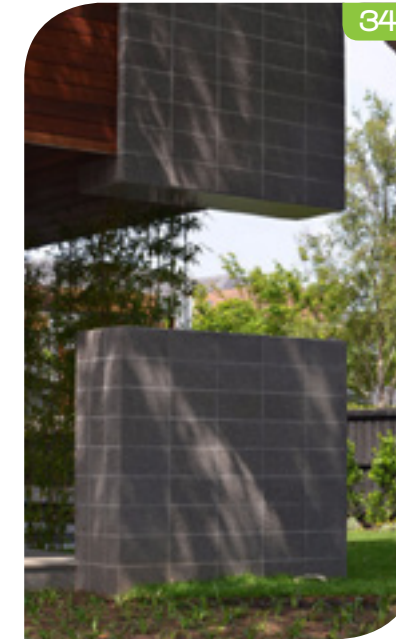
THINK BRICK AWARDS 2016



14: St.Patrick's Primary School College *DRA Coffs Harbour* 15: House 10 Cottesloe *Hofman and Brown Architects* 16: Unit Development – Bundoora *Malcolm Elliott Architects* 17: Daylesford Pavilion Victoria Park *Allied Design Consultants* 18: 1st Brigade Memorial *Australian Army* 19: Laneway House *9point9 Architects* 20: Arthur Street House *Arch Sign* 21: Mildura Townhouse *Mark Hooper Designs* 22: Defence Housing Australia Lindfield – Precinct 3 *Architectus*



23: Blacktown Mount Drutt Hospital New Clinical Services Building *Jacobs* 24: Murray Bridge Green Shopping Centre *Cheesman Architects* 25: Booth Town Houses *Peter Davey Building Design* 26: Calvary Christian College *Bickerton Masters* 27: Terrace House – Little Smith St Fitzroy *Suzanne Dance Architect* 28: Essendon Residential Home *CJ Architects* 29: Wesley House *Walter Brooke & Associates* 30: Mt Ridley College *Y2 Architects* 31: Deauville St *Atkinson Pontifex* 32: Solitary Designer Homes *Solitary Designer Homes* 33: Eldercare 'The Lodge' Wayville *Walterbrooke & Associates*



34: Cosham St Area Projects *Area Projects* 35: Balwyn House *Jiwan Pandey Architects* 36: Tarneit Station *Element Architecture* 37: Berwen Lane *Viv Alexander* 38: Inkerman Road *David Elderman Architects* 39: North Care Medical Centre *Field Labs* 40: Central Reserve, Blackwood Park *Outerspace Landscape Architects* 41: Brickworks Design Studio *Richards & Spence* 42: Mackillop College *IDW Architecture and Interiors* 43: Mona Vale Hospital Community Centre *McConnel Smith & Johnson Architect* 44: Dunalley Primary School *Dunbabin Architects*

2016 JURY

JEREMY EDMISTON,
PRINCIPAL,
SYSTEMARCHITECTS

Jeremy Edmiston, the principal at SYSTEMarchitects, has been practising, teaching and researching architecture in New York City for 17 years. Originally from Sydney, Australia, he moved to the US when he won the Fulbright, Harkness and Byera Hadley scholarships all in the same year. His practice is based in re-evaluating the relationship between the built and natural environments in all their permutations. He has won the Architectural League of New York's Young Architect Award with Douglas Gauthier, a Lindbergh Fellowship, and received a Department of Energy's Center of Excellence Fellowship for his study into improving the environmental efficiency of high-rise buildings.

Edmiston holds a Masters Degree in Architecture from Columbia University and a Bachelor of Architecture Degree from the University of Technology, Sydney, graduating first in his class with three medals for design and academic work. Currently, he teaches thesis students at City University of New York's architecture department. He has also taught at Pratt Institute, Syracuse University, Parsons and Columbia University and has lectured at Yale, Columbia and Princeton, as well as the Bauhaus in Weimar, Germany.

The 2016 judges in Venice
(from left to right): Guy Lake,
Jeremy Edmiston, Clare Cousins,
Elizabeth McIntyre, Neil Durbach
and Cameron Bruhn.

CAMERON BRUHN,
EDITORIAL DIRECTOR,
ARCHITECTURE MEDIA

Cameron Bruhn is the Editorial Director of Architecture Media – the publisher of *Architecture Australia*, *Landscape Architecture Australia*, *Artichoke*, *Houses*, *Houses: Kitchens + Bathrooms*, *Architectural Product News*, ArchitectureAU.com and Selector.com.

Prior to his appointment as Editorial Director, Cameron was the Editor of *Artichoke* and *Landscape Architecture Australia*.

Cameron holds a Bachelor of Architecture from the University of Queensland and is currently undertaking a practice-based PhD at RMIT University. Cameron is an active contributor to design culture through his participation in awards juries, sessional teaching and guest speaking.

CLARE COUSINS,
DIRECTOR, CLARE
COUSINS ARCHITECTS

Architect Clare Cousins founded her eponymous practice in 2005 and has since amassed a suite of varied projects, with a strong focus to site, context, program, materiality, affordability, and sustainability; and a collaborative client-architect relationship.

Her holistic approach to design blurs the boundaries between architecture and interiors, creating poetic yet pragmatic strategies for projects, which seek to celebrate the experience of space and life within it.

Maintaining a balanced professional profile, Clare is actively involved in the broader design community as a mentor, educator, public speaker, committee member, and industry representative.

NEIL DURBACH,
PRINCIPAL, DURBACH BLOCK
JAGGERS ARCHITECTS

Graduating from the University of Cape Town in South Africa in 1978, Neil Durbach set up practice in Sydney after winning the national competition for the new Royal Australian Institute of Architects headquarters building in 1983 at Tusculum in Potts Point, Sydney. In 1998, the office of Durbach Block Architects was established, and he has worked as the principal design architect on all projects by Durbach Block.

In 2005, Neil was appointed an adjunct professor at University of New South Wales, and has taught, lectured, exhibited and judged awards and has been published both nationally and internationally. In 2008, Neil co-curated the Australian Pavilion at the Venice Biennale of Architecture.

GUY LAKE, DIRECTOR,
BATES SMART

Guy Lake is a Director of Bates Smart with more than 20 years experience gained in Australia and overseas. Guy has played a key role in a number of the practice's award-winning residential, commercial and institutional projects and has led the design of a number of successful design competitions.

Guy's most recently completed projects include UNSW Kensington Colleges, which took the 2014 Think Brick Grand Prix Award and an Australian Institute of Architects (AIA) National Award for Residential Architecture – Multiple Housing, while the Gantry, Camperdown won a AIA National Commendation and the Aaron Bolot Award for Residential Architecture - Multiple Housing (NSW). Guy's other award-winning projects include Iglu Central, Parramatta Justice Precinct, NSW Police Headquarters, and Enterprise 1 at the University of Wollongong.

ELIZABETH MCINTYRE,
GROUP CEO, THE CONCRETE
MASONRY ASSOCIATION OF
AUSTRALIA, ROOFING TILE
ASSOCIATION OF AUSTRALIA
AND THINK BRICK AUSTRALIA

Elizabeth has completed a Bachelor of Business Degree from the University of Technology, Sydney and a Masters in International Business at Macquarie University.

Prior to joining Think Brick, Elizabeth has held marketing director positions with Walt Disney Television, the Australian Jockey Club and Sports and Entertainment Limited. Elizabeth played a key role in evolving Ford's V8 Supercar program to convert sponsorship to sales of Ford performance vehicles.

Elizabeth has worked with Australian and international sport and theatre talent. She was responsible for launching the High School Musical franchise and its then-unknown stars in Australia.

Elizabeth is Chair of the Building Products Innovation Council, a graduate member of the Australian Institute of Company Directors, and Chief Executive of Think Brick Australia, The Concrete Masonry Association of Australia and Roofing Tile Association of Australia.

JURY MEMBERS

BRUCE MACKENZIE
LANDSCAPE AWARD

This award was previously part of the Horbury Hunt Award and, in 2013, evolved to include concrete masonry. In 2014 we named the award after renowned Australian landscape architect Bruce Mackenzie AM.

Bruce Mackenzie was responsible for some of Australia's greatest landscape projects, spanning over five decades, to design numerous Australian landmarks and has won many design awards, which highlight his great contribution to the landscape design community.

In 2011 he wrote and published *Design With Landscape*, his fifty-year journey through landscape architecture. Bruce was a founding member of the AILA and has been a state and national president. He was presented with the AILA Award in Landscape Architecture in 1986 and in June 1999 on the occasion of the Queens Birthday honours list, was made a member of the Order of Australia (AM).



© Alex Mayes

WINNER



Nikki To



Natalie Hayllar



Mike Horne

KENSINGTON STREET

TURF DESIGN STUDIO
(WITH JEPPE AAGAARD ANDERSEN)

Kensington Street has been transformed from an abandoned back alley comprising some of Sydney's oldest working-class terraces and warehouses, into a vibrant new inner-city destination bustling with cafes, restaurants, artist studios, new student housing, the Spice Alley market and the reborn The Old Clare Hotel.

A fine-grained urban floor of brick was key to unifying heritage buildings and new contemporary architecture, while making a great place for people. Subtle variations

in brick pattern were used to provide richness and detail while delineating property boundaries, pedestrian through-site links and significant building entrances. Reinstated trachyte heritage kerbing and a new central bluestone spoon drain provide further interest and variation.

Kensington Street sets a new benchmark for the city's future streets and brings a welcome buzz to Chippendale.

"BRICK PAVING IN A SOPHISTICATED HERRINGBONE PATTERN AND EXCELLENT CHOICE OF COLOURS IS THE HERO OF THIS LANDSCAPE PROJECT, SERVING TO EFFORTLESSLY UNIFY SIGNIFICANT EXISTING AND CONTEMPORARY ARCHITECTURAL ELEMENTS."

— 2016 JURY



Simon Wood

MANUFACTURER Austral Bricks / Bowral Bricks MASONRY COLLECTION Hamlet Blue / Bowral Blue PROJECT BUILDER Built PROJECT CONTRACTOR Sam the Paving Man

FINALIST

BINGARA
COUNTRY CLUBJANE IRWIN LANDSCAPE
ARCHITECTURE

Bingara Country Club provides a key social facility within a masterplanned community. The club's open areas offer a series of spaces with different purposes and characters.

In the courtyards, new bricks are used in patterns orientated to the architectural geometry, defining a formal edge to each building. The body paving is formed by a paver in a simple stretcher bond, with accents of a slimmer paver in a herringbone pattern at junctions. A recycled half-brick provides a transition to planted pods.

In the landscape areas, new and recycled bricks are used. Recycled bricks laid on edge form fluid paths in the playground, while two distinctive pavers form bands in the meeting areas.

Bricks were chosen for their flexibility of use, robust properties and earthy colours. The richly textured brick "carpet" adds elegant rusticity to the complex.

"NEW AND RECYCLED BRICKS HAVE BEEN USED TO GENTLY BUT CLEARLY DEFINE ZONES AND INTRODUCE VISITORS TO THE DIFFERENT CHARACTERS OF THE INVITING OUTDOOR SPACES."

— 2016 JURY

MANUFACTURER Austral Masonry / Bowral Bricks **MASONRY COLLECTION**
Hamlet Ash — Hamlet Sepia / Bowral Blue — Gertrudis Brown — Murray Grey
PROJECT BUILDER & PROJECT CONTRACTOR Daracon



Simon Wood Photography

EARTH SCIENCES
GARDEN MONASH
UNIVERSITY

RUSH\WRIGHT ASSOCIATES

The Monash Earth Sciences Garden establishes a new global precedent for the teaching of geology. The rock collection is arranged around tracings of the shapes and forms of Victoria's diverse and ancient geomorphological features. The artificial landforms drain toward the cracking clay pan, which holds water for short periods after rain.

Rock specimens, pavements of stone and brick, gravels, mulches and plantings all echo local landscapes. Forms and shapes collide, creating difference and roughness at spatial

boundaries and enabling those in the garden to experience wild landscape types found in nature. The garden comprises nearly 500 rock specimens, with rock types arranged so that students can map and understand the varied geological processes of Victoria.

Brick was chosen for its colours, durability and origins in naturally sourced clays and sands. The brick pattern is a tracing of a geological survey map, in five earth-tone colours.

"DESIGNED TO EVOKE VICTORIA'S WILD LANDSCAPES AND EDUCATE STUDENTS ON GEOLOGY, THE MONASH EARTH SCIENCES GARDEN USES BRICK PAVING WITH A PALETTE OF NATURAL MATERIALS TO IMPRESSIVE EFFECT."

— 2016 JURY

MANUFACTURER Austral Bricks **MASONRY COLLECTION** Bowral London
— Brahman Granite, Chestnut, Maple, Regency Grey, Silver Sand
PROJECT BUILDER Australian Native Landscape Construction
PROJECT CONTRACTOR Australian Native Landscape Construction

FINALIST



Chris Erskine



Michael Wright



Michael Wright

FINALIST

UTS ALUMNI GREEN

ASPECT STUDIOS

Mathematics and technology inspired the design of the paving for the UTS Alumni Green. A pentagonal tessellation was used to create complex and playful patterns with floral-like flourishes.

In developing the paver, the landscape architect worked with Pebblecrete, a Sydney paving manufacturer, to refine the construction methodology and develop the colour palette. The paver had to be both large enough

to suit the scale of the space and small enough to be laid by hand relatively easily. The regularity of the colour distribution reinforces the mathematical nature of the pattern, while colour variation highlights the unique form. During construction, the architect worked on site with Sam the Paving Man to determine the pattern of the colour distribution, which helped to create such a rich ground surface.

"THIS PAVING IS STRIKING – THE COLOURS, PATTERN AND REPETITION UNITE TO MAKE A POWERFUL STATEMENT THAT ALSO COMPLEMENTS THE SURROUNDING ARCHITECTURE AND LANDSCAPE DESIGN."

– 2016 JURY

MANUFACTURER Custom designed concrete paver designed by Aspect Studios **MASONRY COLLECTION** Pebblecrete 300 x 600mm concrete standard format paver **PROJECT BUILDER** Richard Crookes Constructions **PROJECT CONTRACTOR** Regal Innovations / Sam the Paving Man



FINALIST

CENTRAL RESERVE,
BLACKWOOD PARK

OUTERSPACE LANDSCAPE ARCHITECTS

In developing this reserve and playspace, the landscape architects sought a retaining material that would help manage the existing slope, add value and character, and blend with the natural surroundings.

The solution was developed in close collaboration with the client. The team chose a block that allowed ease of construction, could be used to achieve the desired curve and was cost-effective. The block's split face finish provides visual interest and helps it to blend with other materials.

The same finish on the block wall was also used for the climbing wall.

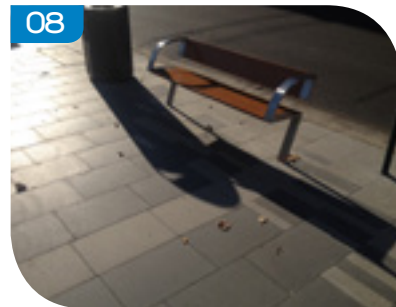
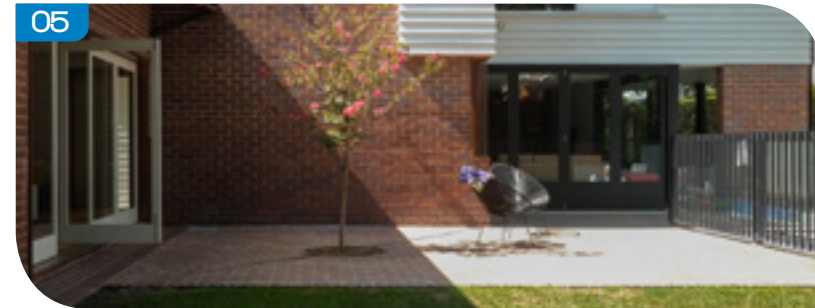
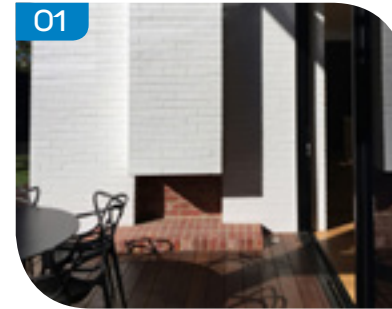
The site posed challenges including a level difference of more than twelve metres. The landscape architects responded by embracing the slope and views, and using the slope in interesting ways to create a challenging playspace. The blockwork provides both functional and aesthetic qualities and is a key feature of the design.

"SERVING AS MORE THAN FUNCTIONAL RETAINING WALLS, THE BLOCKWORK IN THIS RESERVE AND PLAYSACE IS VISUALLY INTRIGUING AND CLEVERLY RESPONSIVE TO THE SITE."

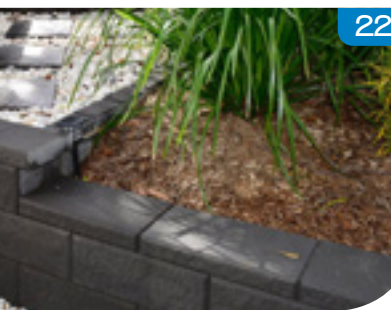
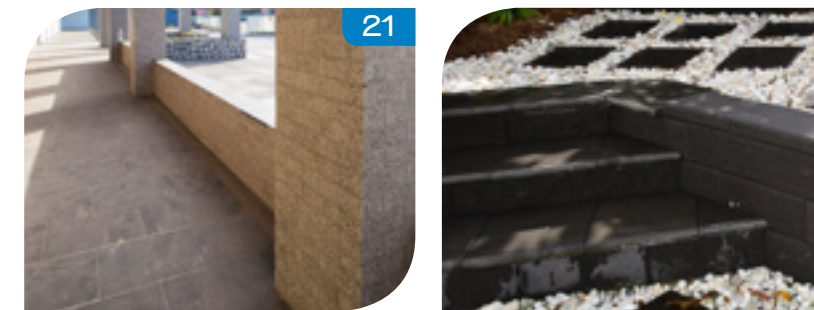
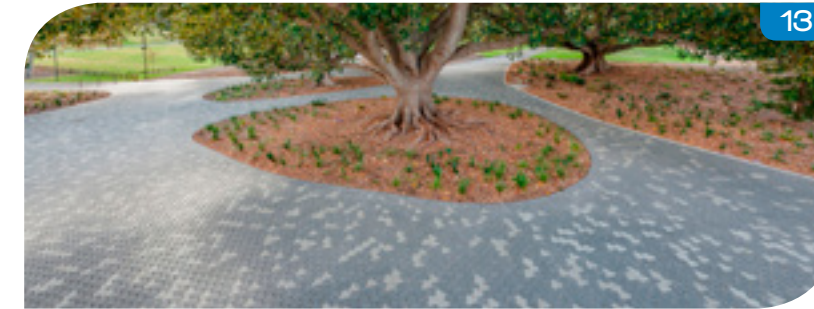
– 2016 JURY

MANUFACTURER Adbri Masonry **MASONRY COLLECTION** Architectural Masonry / Designer Masonry Shotblast **PROJECT BUILDER** Consolidated Landscape Services **PROJECT CONTRACTOR** Consolidated Landscape Services

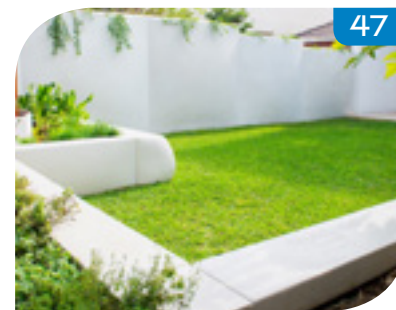
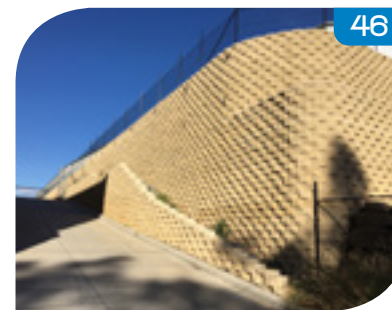
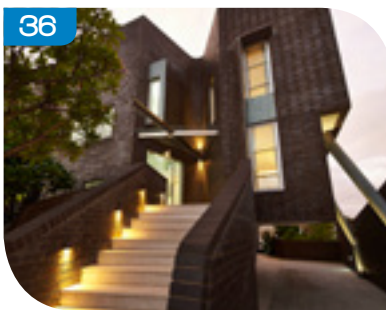
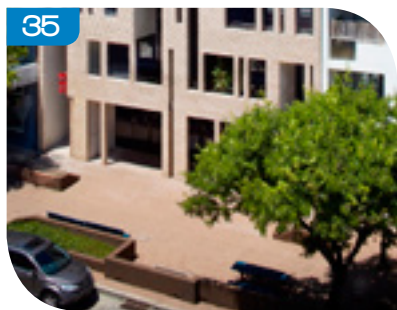




01: Brighton Residence *Pleysier Perkins* 02: The Greenery Garden *Vivid Design* 03: Three Follies *Bush Projects* 04: Carlton Cloister *MRTN Architects* 05: Camp Hill Terrace *Dan Young Landscape Architect* 06: Mary Street Piazza *Place Laboratory* 07: Bardon Garden House *Arcke* 08: Bourke St Stage 2 Upgrade Waterloo *City of Sydney* 09: Wollongong Private Hospital *Context* 10: Toowoomba City Golf Club *W.N. Webb & Associates* 11: Rosalie House *Owen Architecture* 12: Diamantina Designer *Diamantina Designer Homes*



13: Adelaide Oval *Oxigen Architects* 14: Double Courtyard House *Stuart Vokes* 15: Kate's House *Bower Architecture* 16: Claremont Residence *David Barr Architect* 17: Brisbane State High School – New Multi-Level Building Project *Broad Constructions* 18: Capella Drv Project *JA Designs* 19: The Kite *Architecture Architecture* 20: The Vincent *Blake Willis Landscape Architects* 21: East Village Toowoomba *Adbri Masonry* 22: Carrara Project *Junglescapes* 23: Highfields Sports Complex *CKD Architects*



24: Mater Private Hospital – Healing Garden Mobility Deck *PDT Architects* 25: Australian Ballet School *MGS Architects* 26: Paling Court Residential Aged Care Facility *Jackson Teece* 27: Washington Park *Turner Studio* 28: Harbour Mill Project *Grimshaw Architects* 29: Athana Residence *Arche Design Services* 30: Janet Beirne Park *Jane Irwin Landscape Architecture* 31: Kingsway St Nedlands *Artique Homes* 32: Denham 27 Display Home – Rochedale *Ausbuild* 33: Wentworth Point Apartment *Turner Studio* 34: City West Housing, Zetland *Kann Finch Group* 35: Sydney 385 *Smart Design Studio* 36: Applecross House *Iredale Pedersen Hook Architects*

37: Drury Street House *Marc and Co* 38: Aquinas College *Davenport Campbell* 39: Forrester's Beach Retirement Village *Retire Australia* 40: Saltwater Community Centre *Croxon Ramsay Architects* 41: Surf Lane Walk Way *Sutherland Shire Council* 42: Oakdale Central - DHL 2B *SBA Architects* 43: Dunalley Primary School *Dunbabin Architects* 44: 1st Brigade Memorial *Australian Army* 45: Mildura Townhouse *Mark Hooper Designs* 46: Oatley Close Industrial Estate *United Crib Block Constructions* 47: Organic Garden *Pittorino Designs*

HORBURY HUNT COMMERCIAL AWARD ENTRANTS INDEX

<p>Winner: Antica Pizzeria e Cucina Genesis Studio M.C: Antica M: Austral Bricks P: Bowral Bricks – Simmental Silver</p> <p>Finalist: Australian Ballet School MGS Architects M.C: DT Commercial M: Bowral Bricks / Austral Bricks P: Bowral Bricks – Simmental Silver – Murray Grey / Austral Bricks – Dynasty – Karrington Silver – Cognac Illusion – Brushed Leather</p> <p>Finalist: C3 Gallery Folk Architects M.C: Mogford & Glenn Bricklaying M: Austral Bricks P: Bowral Bricks – Charolais Cream</p> <p>Finalist: Sydney 385 Smart Design Studio M.C: Better Brick Services M: Austral Bricks P: Bowral Bricks – Simmental Silver</p> <p>Finalist: Saltwater Community Centre Croxon Ramsay Architects M.C: Lawler Bricklaying M: Austral Bricks P: Colourbrick – La Palma – Miro Standard Brick</p> <p>01: ABC Brick Sales Headquarters Hooker Design M.C: One Sector M: Recycled Brick P: Reused Brick</p> <p>02: Mordialloc Preschool HEDE Architects M.C: Canberra Bricklaying M: Austral Bricks</p>	<p>P: Burlesque – Chilling Black – Deepening Green – Enchanting Yellow – Luscious Red – Smashing Blue / Elements – Zinc</p> <p>03: Olympic Park Community Facilities Collingwood Football Club Croxon Ramsey M.C: Caruso Bricklaying M: Austral Bricks / Bowral Bricks P: Austral Bricks: Elements – Zinc / Bowral Bricks: Bowral Bricks – Charolais Cream</p> <p>04: Jimmy Grants Richmond March Studio M.C: Bedrock M: Recycled Brick P: Reused Brick</p> <p>05: Station 2A Olsson & Associates Architects M.C: JB Masonry M: Austral Bricks P: Bowral Bricks – Gertrudis Brown</p> <p>06: Belmont Police Station Gardner Wetherill & Associates M.C: Masonry Constructions M: Austral Bricks P: Burlesque – Smashing Blue / Ultra Smooth – Jazz – Chill</p> <p>07: Jarrett St Coffs Harbour Harvey Designer Homes M.C: Brett Harvey M: Austral Bricks P: Everyday Life Bricks – Freedom – Leisure</p> <p>08: Eddystone Nursing Home McNully Architects M.C: Kirk Building, David Holmes M: Bowral Bricks</p>	<p>P: Bowral Bricks – Guernsey</p> <p>09: Cass Calder Flower Architects M.C: HYNTOR M: Austral Bricks P: Dynasty – Brushed Leather</p> <p>10: Dynasty Apartments CBM Venture M.C: Hui Xin Constructions M: Austral Bricks P: Bowral Bricks – Bowral Brown, Murray Grey, St Pauls Cream / Symmetry – Grey</p> <p>11: Allity Greenwood GSA Architects M.C: Grindley Constructions M: Bowral Bricks P: Bowral Blue</p> <p>12: Pittwood Village Nursing Home Cant Didder Architects M.C: ABL Bricklaying M: Austral Bricks P: Bowral Bricks – Bowral Blue – Simmental Silver</p> <p>13: Rutherford Technology High School EJE M.C: Richard Crookes Construction M: Bowral Bricks P: Bowral Bricks – Brahman Granite</p> <p>14: Trinity Grammar Aquatic Centre Gardner Wetherill + Associates M.C: Walsos Bricklaying NSW M: Austral Bricks P: Bowral Bricks – Limousin Gold</p> <p>15: Washington Park Turner Studio M.C: DJD M: Austral Bricks P: Bowral Bricks – Bowral Brown</p>	<p>16: Edge Ultimo Revay & Unn M.C: Next Constructions M: Austral Bricks P: Bowral Bricks – Bowral Brown</p> <p>17: Harbour Mill Project Grimshaw Architects M.C: Aspec Masonry M: Austral Bricks / Recycled P: Austral: La Paloma Gaudi / Reused Bricks</p> <p>18: 19 Wandoo Street Richards & Spence M.C: Flowcrete Constructions M: Austral Bricks P: La Paloma, Miro</p> <p>19: The Barcelona Guida Moseley Brown Architects M.C: Checkm8 Construction + CTR Pacific M: Austral Bricks P: Bowral Bricks – Charolais Cream – Brahman Granite</p> <p>20: Our Lady of the Angels Church De Angelis Taylor and Associates M.C: Tony Knockers Construction M: PGH Bricks & Pavers P: Masters – Van Gogh</p> <p>21: Benedict XVI Retreat Michael Suttie & Partners & Sidney Roje Architect M.C: ABL (Authentic Bricklaying), Vince Agostino M: PGH Bricks & Pavers P: Timeless Sandstocks – Mosman</p> <p>22: Knox Grammar - Knox Senior Study Academy JSA Studio M.C: Bricks 'n' Blocks M: Austral Bricks P: Bowral Bricks – Shorthorn Mix</p>	<p>23: Butler Apartments D P Toscano Architects M.C: TJL Bricklaying M: Daniel Robertson P: Hawthorn 76mm – Hawthorn Blacks</p> <p>24: Bupa Aged Care Toowoomba Jackson Teece M.C: Southern Cross Bricklaying M: Austral Bricks P: Austral One – Grecian Gold</p> <p>25: Northpoint Shopping Centre Cottree Parker Architects M.C: Southern Cross Bricklaying M: Austral Bricks / Bowral Bricks P: Austral: Precision – Precision Red / Bowral Bricks: Bowral Blue</p> <p>26: Hawkesbury Multidisciplinary Clinical School, University of Notre Dame Martin & Ollmann M.C: Aspec Bricklaying M: Boral Bricks P: Escura Velour – Terracotta – Red, Opaline – Garnet, Escura Smooth, Elan Barwon</p> <p>27: Gunners Cottages, Fremantle Griffiths Architects M.C: Gordon Benson Bricklaying M: Boral Bricks / Midland Brick (WA) P: Boral Bricks: Designer Block – Spit face – Honed Face / Midland Bricks (WA): Midland Reds – Heritage Red</p> <p>28: Kirk Apartments Seniors Independent Living Units In Burwood Architects Contempo M.C: The Country Group</p>	<p>M: Austral Bricks P: Bowral Bricks – Bowral Blue</p> <p>29: Blacktown Mount Druiitt Hospital New Clinical Services Building Jacobs M.C: Hanson M: Robertsons P: Robertson Façade Systems, Robertson 'Blue Grey Blend' brick snap.</p> <p>30: Mt Pleasant Primary School Kneeler Design M.C: Gaine Constructions M: PGH Bricks & Pavers P: Urban Metal Splits – Silver Spark Splits, Seascape Splits – Lagoon Splits, Dry Pressed – Mowbray Blue, Dry Pressed 50mm Splits – Mowbray Blue</p> <p>31: Arundel Urbanest Student Accommodation Antoniaades Architects M.C: EB Masonry M: Austral Bricks P: Bowral Bricks – Bowral Blue – Bowral Blown – Capitol Red</p> <p>32: The Coopers Jackson Teece M.C: Lamio Construction M: Austral Bricks P: Classics – Blackheath</p> <p>33: Ruby Tower Popov Bass M.C: Conrina Masonry M: Austral Bricks P: Burlesque – Luscious Red – Ruby Red</p> <p>34: Salisbury East High School Performing Arts Centre Russell & Yelland Architects M.C: Pascale Constructions M: Austral Bricks P: Hallett – Colonial Red, Urban One – Cobolt</p>	<p>35: Park Raphael JCB Architects M.C: DT Commercial M: Austral Bricks P: Classic – Red</p> <p>36: Salisbury Command Fire Station Walterbrooke Architects M: Austral Bricks P: Hallett – Colonial Red</p> <p>37: Erko Apartments SJB Architects M.C: Conrina Masonry M: Austral Bricks P: Bowral Bricks – Bowral Blue – Charolais Cream</p> <p>38: Sullivan Nicolaides Queensland Office Nettleton Tribe M: Austral Bricks P: Austral Bricks Blackheath</p> <p>46: Shirley Lane Fieldwork Projects M.C: Mancini Make M: Bowral Bricks P: Bowral Bricks – Charolais Cream</p> <p>47: Parklife Apartments Aspire Homes M.C: Aspire Homes M: PGH Bricks & Pavers P: Alchemy – Pewter</p> <p>48: Colonnades The Buchan Group M.C: Sarah Construction M: PGH Bricks & Pavers P: Timeless Sandstock – Seaforth, Classic Sandstock – Northbridge</p> <p>49: Rosanna Green Romano Property Group M.C: Brickon M: Austral Bricks P: Classic – Cream, Elements – Zinc</p> <p>50: Emmanuel Christian School</p>	<p>P: Bowral Bricks – Bowral Blue, Metropolis – Alabaster</p> <p>43: Casino Aboriginal Medical Service Kevin O'Brien Architects M.C: Bryant M: Warwick Brick Works P: Warwick Brick Works: Face Bricks – Ebony</p> <p>44: IRT Woodlands Brad Read Design Group M.C: Flowcrete M: Austral Bricks P: Bowral Bricks – Simmental Silver – Brahman Granite</p> <p>45: Killara Multi Residential Aleksandar Design Group M.C: Majevisa Bricklaying M: Austral Bricks P: Austral Bricks Blackheath</p> <p>46: Shirley Lane Fieldwork Projects M.C: Mancini Make M: Bowral Bricks P: Bowral Bricks – Charolais Cream</p> <p>47: Parklife Apartments Aspire Homes M.C: Aspire Homes M: PGH Bricks & Pavers P: Alchemy – Pewter</p> <p>48: Colonnades The Buchan Group M.C: Sarah Construction M: PGH Bricks & Pavers P: Timeless Sandstock – Seaforth, Classic Sandstock – Northbridge</p> <p>49: Rosanna Green Romano Property Group M.C: Brickon M: Austral Bricks P: Classic – Cream, Elements – Zinc</p> <p>50: Emmanuel Christian School</p>	<p>Luttrell Pyefinch Architects M.C: Preston Downie bricklaying M: Austral Bricks P: Indulgence – Praline, Burlesque – Deepening Green – Enchanting yellow, Elements – Graphite</p> <p>51: The Kooyong Ewert Leaf M.C: H Troon M: Recycled P: Reused Brick</p> <p>52: The Brighton Retirement Community, Croydon NSW Campbell Luscombe Architects M.C: City Bricklaying Unanderra M: Austral Bricks P: Metropolis – Ruby – Marcasite – Topaz – Tourmaline, Ultra Smooth – Lush</p> <p>53: Albany Highway Development Kloppe & Davis Architects M.C: East Coast Bricklaying M: Austral Bricks P: Bowral Bricks – Bowral Blue</p> <p>54: The Coppel & Piekarski Family Disability Respite Centre Jackson Clements Burrows Architects M.C: Stuart Dent P/L M: PGH Bricks & Pavers P: Naturals – Frost</p> <p>55: CQU Health Clinic Extension Reddog Architects M.C: JM Kelly Builders M: PGH Bricks & Pavers P: Urban Living – Harvest Cream, Alpine – Lifestyle – Crevole, Vibrant – Fizz</p> <p>56: Howrah Primary</p>	<p>Kindergarten Liminal Studio M.C: Austral Bricks M: Austral Bricks P: Symmetry – Red</p> <p>57: St Thomas More College, NRAS Accommodation Cox Howlett & Bailey Woodland M: Austral Bricks P: Bowral Bricks – Charolais Cream , Symmetry – Jackson</p> <p>58: John Paul II College, Collins Caddaye Architects M.C: Optimum Brick and Blocklaying M: PGH Bricks & Pavers P: Dry Pressed – Mowbray Blue</p> <p>59: WSU Parramatta Early Learning Centre JDH Architects M.C: Icor M: Austral Bricks P: Bowral Bricks – Capitol Red</p> <p>60: Klemzig Stepping Stone (SA) Childcare and Early Development Centre Eastern Building Group M.C: Adrian Call a Brickie M: PGH Bricks & Pavers P: Seascape – lagoon, Connoisseur – Vanilla Ice</p> <p>61: The Whitfield John L Silbert & Associates M.C: OACT M: Midland Brick (WA) P: Midlands Reds – Heritage Red</p>
--	---	--	--	--	---	--	--	--	--

HORBURY HUNT RESIDENTIAL AWARD ENTRANTS INDEX

<p>Winner: Applecross House Iredale Pedersen Hook Architects M.C: Alistair Adams Tyrone Bricklaying M: Austral Bricks P: Austral Elements Platinum and Zinc</p> <p>Finalist: Carr Pace Residence Kloppe & Davis Architects M.C: Gary Wood & John Darwin M: Austral Bricks P: Bowral Bricks – Gertrudis Brown</p> <p>Finalist: Naranga Avenue House James Russell Architect M.C: Gold Coast Bricklaying M: Austral Bricks P: Colourbrick – La Palma</p> <p>Finalist: YH Residence</p>	<p>Scott Carver M.C: NDG Bricklaying M: Bowral Bricks / Austral Bricks P: Bowral Bricks – Bowral Blue – Gertrudis Brown / Austral Bricks – Burlesque – Indulgent White</p> <p>Finalist: Carlton Cloister MRTN Architects M.C: Technique Construction M: Nubrik P: Nubrik Classic 230 – Chapel Red</p> <p>01: Buena Vista Shaun Lockyer Architects M.C: Crowley MDR M: PGH Bricks & Pavers P: Urban Living – Black & Tan</p> <p>02: Rosalie House Owen Architecture M.C: Robson Constructions M: PGH Bricks & Pavers /</p>	<p>Recycled Bricks P: Urban Living – Black & Tan / Reused Bricks</p> <p>03: Integrity New Homes Korora Display Integrity New Homes M.C: Norm Oxenbridge M: PGH Bricks & Pavers P: Altitude – Olympus</p> <p>04: Brad Acheson Display Home Brad Acheson Homes M.C: Brad Acheson M: Austral Bricks P: Metallix</p> <p>05: D House Marston Architects M.C: Pro Active Constructions M: Recycled Brick P: Reused Brick</p> <p>06: Better Built Homes Better Built Homes</p>	<p>M.C: Better Built Homes M: Austral Bricks P: Urban One – Chiffon</p> <p>07: Vogue Homes Vogue Homes M.C: Vogue Homes M: Austral Bricks P: Ultra Smooth – Jazz</p> <p>08: Diamantina Designer Homes M.C: Diamantina Designer Homes M: Bowral Bricks P: Bowral Bricks – Bowral Blue</p> <p>09: Berringa Rd Park Orchards Latitude 37 M.C: Latitude 37 M: Austral Bricks P: Austral Elements – Zinc</p> <p>10: Shadow House</p>	<p>Matt Gibson Architecture + Design M.C: Warwick Construction M: TBA P: TBA</p> <p>11: Bardon Garden House Arcke M.C: Natural Lifestyle Homes M: Lincoln Brickworks P: Lincoln Brickworks – Hand Crafted Heritage Bricks – McKinlay Grey Standard Brick</p> <p>12: Goulburn Valley House Rob Kennon Architects M.C: GLDC Marshall M: Recycled P: Reused Brick – Recycled Pressed Red with sand and cement render</p> <p>13: Country House Austin Design</p>	<p>M.C: Austin Design M: Recycled P: Reused Brick</p> <p>14: The Kite Architecture Architecture M.C: KLE Building Group M: Paddy's Bricks P: Paddy's Bricks – Recycled pressed red clay bricks</p> <p>15: AT Courtyard House, St Helena Mary Traitsis M.C: De Lillo Carpentry & Constructions M: PGH Bricks & Pavers P: Dry Pressed – Gledswood Blend</p> <p>16: Waratah Bay Hayne Wadley Architecture M: Euroa Clay Products P: Glazed Bricks – Glazed –</p>	<p>Black & Gunmetal</p> <p>17: Kate's House Bower Architecture M.C: LBA Construction M: TBA P: TBA</p> <p>18: Double Courtyard House Stuart Vokes M.C: John Wales, JR Wales Construction M PGH Bricks & Pavers P: Dry Pressed – Macarthur Mix – Mowbray Blue</p> <p>19: Down Size Up Size House Carterwilliamson Architects M.C: Andrew Burton Constructions M: Recycled P: Reused Brick</p> <p>20: Guest House LS Design Construct M.C: L S Design Construct M: PGH Bricks & Pavers P: Altitude – Apollo</p> <p>21: Llewellyn House Studioplusthree M.C: M & R Muscat M: Recycled P: Reused Brick</p> <p>22: Hip & Gable Architecture Architecture M.C: Grenville Architectural Construction M: Euroa Clay Products / Recycled Bricks P: Euroa Clay Products – Glazed Bricks – Colour, Bluestone & Paddy's Bricks / Recycled pressed red clay bricks</p> <p>23: Claremont Residence David Barr Architect</p>	<p>M.C: M-Construction M: TBA P: TBA</p> <p>24: Kworbenare by Cunningham Custom Homes Cunningham Custom Homes M.C: Cunningham Custom Homes M: Boral Bricks P: Opaline – Garnet</p> <p>25: Carwoola House Paul Barnett Design Group M.C: Wayne Torres Constructions M: Austral Bricks P: Bowral Bricks – Bowral Blue</p> <p>26: Gremmo Homes Gremmo Homes M.C: Gremmo Homes M: PGH Bricks & Pavers P: Dry Pressed – Mowbray</p>	<p>Blue</p> <p>27: Elias House Harmer Architecture M.C: David & Heath Cardwell, DA&MJ Cardwell Bricklaying M: Austral Bricks / Krause Brickworks P: Austral: Bowral Bricks – Simmental Silver / Krause Brickworks – Grampians Blue Dark Blend</p> <p>28: Frazer House Logan Studio M.C: Built Collective M: Boral Bricks / Recycled P: Designer Block – Split Face / Recycled Reds sourced from Victorian Buildings demolished</p> <p>Index continues on page 63</p>
--	---	---	---	--	--	--	---	---

ROBIN DODS TERRACOTTA ROOF AWARD

Since the introduction of the Roof Tile Excellence category into the awards in 2014, the response has been greatly positive with many worthy past winners pushing the envelope in innovative roof design with terracotta and concrete roof tiles in their residential or commercial building projects.

To further showcase the sustainability benefits, versatility and design possibilities of terracotta roof tiles, a new award category has been introduced this year, named after renowned architect Robin S. Dods.

Robin Dods believed in sustainable design to suit the climate, especially in roofing. His distinctive style of gabled roofs for domestic dwellings, which combined passive solar design while allowing for ventilation and insulation, became prevalent throughout Queensland in the early 1900s.



The Roofing Tile Association of Australia (RTAA) is the roof tile industry's peak organization, representing the concerns and interests of members across the country, with a particular focus on training (including apprenticeships) and occupational health and safety issues.

Collectively the RTAA membership is responsible for nearly all the installation of roofing tiles in Australia.

WINNER



ELIAS HOUSE

HARMER ARCHITECTURE

The Elias House is a two-storey infill dwelling in the backyard of an existing warehouse in Melbourne's North Fitzroy. The natural elements of terracotta and timber interact to form an uneven and textured surface wrapping around the exterior. The use of terracotta roof tiles in the colours of Delta Sands and Slate Grey pick up on the tones of the brickwork.

The combination of brick, terracotta and timber grounds the house in its suburban context, while the vertical proportions align with the adjacent Victorian row houses.

The use of durable natural materials allowed the creation of a beautiful building envelope that matches the client's brief for a low-maintenance dwelling. Simple, cost-effective construction methods allowed feature materials to be specified within the budget. Terracotta tiles were selected for their natural beauty and texture and their enduring colour retention, which will maintain the aesthetic of the house for years to come.

"THIS CHARISMATIC HOME BEAUTIFULLY BLENDS TERRACOTTA TILES AND TIMBER TO PRESENT A UNIQUE FACADE THAT IS BOTH INTRIGUING AND WELCOMING. THE COLOUR VARIATIONS AND VERTICAL TILING ARE STANDOUT ELEMENTS OF THE DESIGN."

– 2016 JURY

MANUFACTURER Monier Roofing ROOF TILE COLLECTION Nullarbor
– Slate Grey, Delta Sands PROJECT BUILDER Camson Homes PROJECT
CONTRACTOR Monier Roofing Specialist

FINALIST

SAINT COLUMBA'S
CATHOLIC CHURCH

BRUCE CALLOW & ASSOCIATES

Saint Columba's Catholic Church sits on a hilltop in South Perth overlooking the Swan River and toward the city of Perth on the opposite foreshore. The church site is part of an expansive complex including a presbytery, parish centre, primary school and convent. The heritage church, built in 1937, was designed by prominent Catholic Church interwar and postwar architect Edgar Le Blond Henderson in the Interwar Romanesque style,

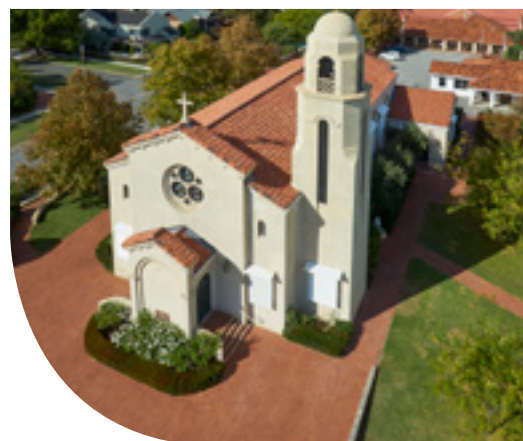
with Californian Mission style influences popular for religious buildings of the era.

The church remains very much in its original condition. This project involved external conservation work to its prominent tower, cupola, gold cross and stained glass tower windows, as well as external wall cleaning and replacement of the terracotta tiles to its main roof.

"THE EXTERNAL CONSERVATION WORK TO THIS HERITAGE CHURCH IN SOUTH PERTH IS RESPECTFUL OF THE ORIGINAL ARCHITECTURE AND DEMONSTRATES THE VERSATILITY AND VALUE OF TERRACOTTA TILES IN SUCH PROJECTS."

— 2016 JURY

MANUFACTURER Bristle Roofing ROOF TILE COLLECTION Curvado Roja, Grande, Amber Haze PROJECT BUILDER Clinton Long Project Management PROJECT CONTRACTOR Pitt Roofing



FINALIST

BAYSIDE FIRE
STATION

OWEN ARCHITECTURE

This heritage-listed building housed the Wynnum Fire Station service from 1938 until 2004. The clients have four young children and were looking to provide covered vertical circulation without compromising the building's character.

The design internalizes the rear facade, preserving its scale and detail as much as possible. While the original building separated the upper and lower levels – work downstairs and living upstairs – the new addition enables the upper and lower levels to operate together.

The addition is singular and simple to enable recognition between the heritage building and the new work. The new roof preserves the symmetric and civic scale of the original building. The intervention connects family life with the preserved rear facade and the civic-scaled rear landscape.

The roof shingles are both traditional and contemporary in character, and have been used en masse to give clarity to the design concept.

"THE HERITAGE SIGNIFICANCE OF THIS DWELLING IS CELEBRATED BY THE NEW WORK, WHICH USES TERRACOTTA ROOF SHINGLES EN MASSE TO REFERENCE THE ORIGINAL BUILDING WHILE PROVIDING A COMPELLING NEW ADDITION."

— 2016 JURY

MANUFACTURER Boral Roofing ROOF TILE COLLECTION Shingle / Sydney Red PROJECT BUILDER Kurt Fern PROJECT CONTRACTOR The Proper Building Company



FINALIST

KNOX GRAMMAR – KNOX SENIOR STUDY ACADEMY

JSA STUDIO ARCHITECTS

This project involved the construction of the new senior centre for Knox Grammar School, also known as the Knox Senior Study Academy. The development comprised twenty-two classrooms for 550 students.

stunning aesthetic representative of Knox Grammar School.

The beautifully detailed brickwork throughout brings together tradition and innovation in what is a truly inspiring work of architecture.

The design uses a range of tiles to create a traditional, proud and

"TERRACOTTA ROOF TILES HAVE BEEN USED TO CELEBRATE THE PROUD TRADITION OF THE SCHOOL WHILE PROVIDING A MODERN STUDY ACADEMY FOR THE STUDENTS."

– 2016 JURY

MANUFACTURER CSR Monier ROOF TILE COLLECTION Marseille Pattern, 'sunset' Terra Cotta Roof Tiles PROJECT BUILDER ADCO Constructions PROJECT CONTRACTOR ADCO-appointed roof tile contractor



FINALIST

HAWTHORN SHINGLE HOUSE

JANE RIDDELL ARCHITECTS

The Hawthorn Shingle House is a simple, single-space addition to the rear of a Californian bungalow. The challenges of designing for a back garden with a southerly aspect necessitated a volume that presented a lower profile to the south, but offered the opportunity to collect light via a highlight window to the north. The existing house, with its gabled roof, inspired the addition's extruded gable form. A roof shingle was applied to both the walls and roof of the addition to enable a seamless transition that further unifies the form.

The shingle also met the unique requirements of a covenant on the site, which stated that all buildings are to have a roof consisting wholly of slates or tiles and to have all external walls constructed wholly of brick. In this context, the roof shingle cladding enabled the project to transcend the conventional brick veneer and Marseille tile typology of the area, and to become a contemporary companion to its Californian bungalow counterpart.

"THIS SMALL ADDITION TO A CALIFORNIAN BUNGALOW REFERENCES THE GABLED ROOF OF THE EXISTING HOUSE, INTERPRETING IT IN A SOPHISTICATED WAY TO PROVIDE A CONTEMPORARY YET GENTLE NEW FORM."

– 2016 JURY

MANUFACTURER Boral Roofing ROOF TILE COLLECTION Shingle / Asphalt PROJECT BUILDER Building Renovations and Design PROJECT CONTRACTOR Gary Stevanov, Boral Roofing



2016 MASTERPIECES

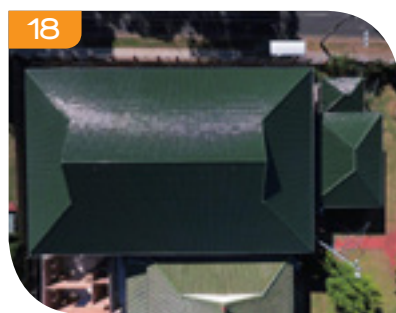
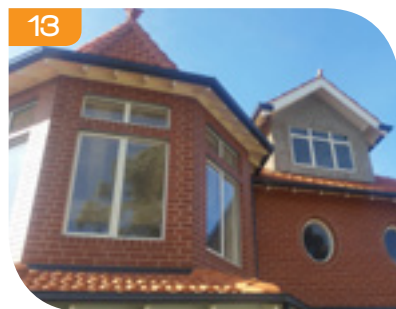
Full entries can be viewed online at rtaa.com.au

ROBIN DODS TERRACOTTA ROOF AWARD

ROBIN DODS TERRACOTTA ROOF AWARD

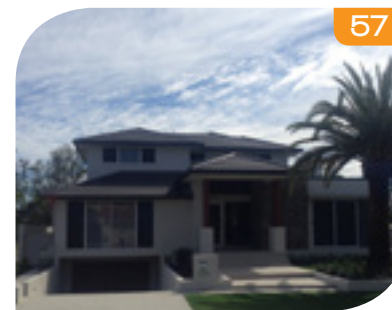
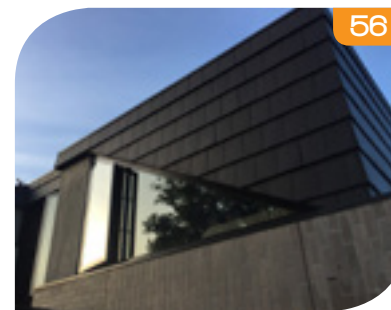
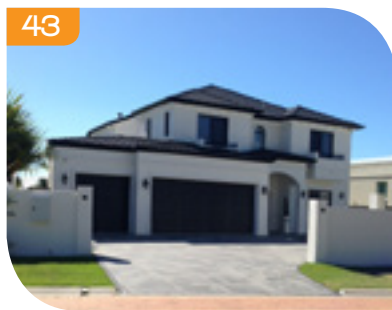
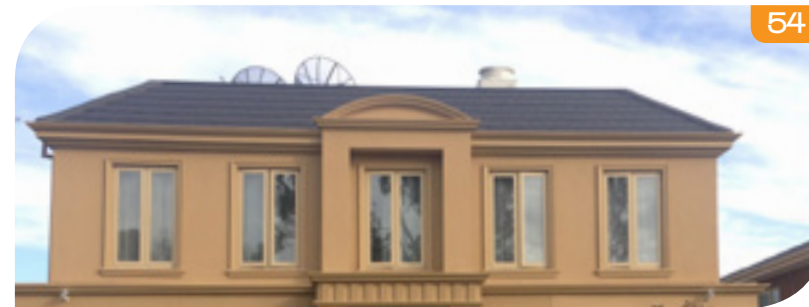
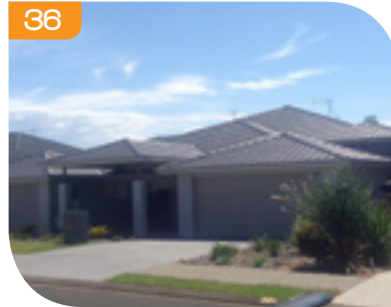
Full entries can be viewed online at rtaa.com.au

THINK BRICK AWARDS 2016



01: St Francis Xavier Cathedral *John Taylor Architect* 02: Webb Street, Brighton *Paolo Pianezze Architect* 03: Brash Road Project *Dane Design Australia* 04: Applecross Residence *Design Wise* 05: Hillarys Residence *Ryan Cole* 06: Denham 27 Display Home - Rochedale *Ausbuild* 07: Casa dei Sogni (House of Dreams) *John Simpson Architect* 08: Granvue Display *Urban Space Craft* 09: Rosa Catania *WDC Design* 10: Carrington Manor *Stuart Osman Building Designs* 11: Rangeville Manor *John Simpson Architects* 12: Toorak House *nill* 13: Bolingbroke House *Faraday Homes* 14: Serenity Lodge 15: Donovans Restaurant *Blair Webb & Zemski* 16: Miramar House *Stuart Osman Building Design* 17: Kellyville *Tasmeem* 18: Bonnyrigg Temple *Algorry Zappia and Associates*

19: Canterbury House *Anderson Homes* 20: The Eighth Avenue 21: Potts Point St Luke's Care *O'Briens Roofing* 22: Glen Iris *Stonehaven Homes* 23: East Fremantle Residence *Ryan Cole* 24: Emu Plains *Sharon Jones Accomplished Designs* 25: Dural *Bellevue Projects* 26: Utopia *Davis Sanders Homes* 27: Mt Vernon *Paul Meyer Design* 28: Gracemere Grace *Robinson Architects* 29: Oaksbrook *Scott Salisbury Homes* 30: Russell Street Residence *Stephen Green & Associates*



31: Rose Bay **Alvaro Bros** 32: Western Australian Golf Club **McCombie Construction** 33: Alscher Residence **Robert Weir** 34: D House **Marston Architects** 35: Rosalie House **Owen Architecture** 36: Marbuck Ave **Collins W Collins** 37: Rothbury House **Stibbard Homes** 38: Vogue Homes **Vogue Homes** 39: Shadow House **Matt Gibson Architecture + Design** 40: Burlington Rd **Urban Apartments** 41: Allity Greenwood **GSA Architects** 42: Thornton **Stuart Everitt Designs** 43: Albert Radium **John Campbell Design** 44: Maudsland House **Stuart Osman Building Designs**

45: Tandarook House 46: Kingscliffe Haven **Mathew Dagg** 47: Kingsway St Nedlands **Artique Homes** 48: Hamptons House in Brighton **Gary McFarlane & Associates** 49: Brennan House **Schriek Building Group** 50: Marsden Park **Wisdom Homes** 51: Glencairn Manor **Neo Building Design** 52: Normandie on Tamborine **Home Designs By Vivki** 53: Bam Bam Boo Outlets **Design Theory/Webster and Allan JV** 54: Balwyn French Provincial **C E C Design Group** 55: Hamptons In Ravenswood **Cachet Homes** 56: Doris St **Spaces Design Group** 57: Cressbrook Manor on Hope **Stuart Osman Building Design** 58: Glen Iris Extension **Brettell Developments** 59: Bilyana at Balmoral **John Cameron Architects**

HORBURY HUNT RESIDENTIAL AWARD ENTRANTS INDEX (CONT'D)				M.C: MASONRY CONTRACTOR				M: MANUFACTURER				P: PRODUCT																																																																																						
29: The Substation Group M.C: Moore Constructions M: Recycled Brick P: Reused Brick	32: Brennan House Schriek Building Group M.C: Schriek Building Group	M.C: JR Bricklayers M: PGH Bricks & Pavers P: Roman Splits – Greenway Roman Splits	Hawthorn Tan	39: Toowoomba House Schriek Building Group M.C: Schriek Building Group M: PGH Bricks & Pavers P: Masters – Da Vinci	P: Dry Pressed – Mowbray Blue	42: Queens Park Re-Purposed Federation POC+P Architects M.C: Allans Bricklaying Services M: PGH Bricks & Pavers P: Alchemy – Pewter	45: Abercrombie Tim Stewart Architects M.C: Bond All Brick and Blocklaying & Empire Ceramic M: PGH Bricks & Pavers P: Dry Pressed – Macarthur Mix, Classic Sandstock – Blackett, Timeless Sandstock – Balmain	47: Salter Como Project George Yeremeyev and Associates M.C: Dane Salter M: PGH Bricks & Pavers P: Dry Pressed – Mowbray Blue	52: Kingfisher House Josephine Hurley Architecture M.C: Arthur & Sons M: Austral Bricks / Namoi Valley Brickworks P: Bowral Bricks – Bowral Blue / Namoi Valley Brickworks - Federation Blue	M: Midland Bricks (WA) P: Georgian Range – Richmond	55: Camp Hill Terrace Dan Young Landscape Architect M.C: Dan Young Landscape Architect M: PGH Bricks & Pavers P: Urban Living – Black & Tan	P: Paving – Stradapave	10: Toowoomba City Golf Club W/N Webb & Associates Architects M.C: Hutchinson Builders M: Adbri Masonry P: Retaining wall - Versawall	14: Double Courtyard House Stuart Vokes M.C: John Wales, JR Wales Construction M: PGH Bricks & Pavers P: Dry Pressed – Macarthur Mix – Mowbray Blue	M.C: JA Designs M: National Masonry P: Designer Range – Split Face – Charcoal	19: The Kite Architecture Architecture M.C: KLE Building Group M: Recycled P: Reused Brick	26: Paling Court Residential Aged Care Facility Jackson Teece M.C: Whole Landscapes M: Adbri Masonry P: paving – Quadro TM – Stradapave – Haven Brick	30: Janet Beirne Park Jane Irwin Landscape Architecture M.C: Wilson Pederson M: Austral Bricks P: Burlesque – Smashing Blue , Bowral Bricks – Bowral Blue	35: Sydney 385 Smart Design Studio M.C: Better Brick Services M: Austral Bricks P: Bowral Bricks – Simmental Silver	39: Forresters Beach Retirement Village Retire Australia M.C: Scape Constructions M: Austral Masonry P: GB Sandstone Split Face – Beach	M: Austral Masonry P: Keystone – Charcoal	43: Dunalley Primary School Dunbabin Architects M.C: All brick Tasmania P: Grey Block – Grey / Coloured and standard blockwork sizes 290 x190mm & 290 x 90mm colour's including Black, Fossil, white, Oatmeal	46: Oatley Close Industrial Estate United Crib Block Constructions M.C: United Crib Block Constructions M: Austral Masonry P: Keystone – Almond																																																																											
30: The Brick House Hall Bowra Architects M.C: Fine Designs and Developments M: Austral Bricks P: Bowral Bricks – Bowral Blue, Hamlet – Hamlet Blue	33: Lees House Rob Kennon Architects M.C: Grabac Constructions M: Recycled P: Recycled Pressed Red with sand and cement render	36: Tandarook House M.C: Doug Scott Builders of Ivanhoe	37: Drury Street House Marc and Co M.C: MCD Constructions M: PGH Bricks & Pavers P: Urban Living – Black & Tan	40: Doris St Spaces Design Group M.C: Abs's Bricklaying M: Austral Bricks P: Bowral Bricks – Simmental Silver – Charolais Cream	43: Indigo Slam Smart Design Studio M.C: Total Coordination M: Austral Bricks P: Bowral Bricks – Simmental Silver	46: RD Homes Que Court Riverside RD Homes M.C: Lillico Bricklaying M: Austral Bricks P: Yarra Burnley 50	48: Bal Harbour Shane Denman Architects M.C: Resort Constructions M: Austral Bricks P: Austral Bricks – Burlesque Range – Indulgent White – Glazed	49: Aston Milan Rochedale Display Aston Milan Rochedale Display	53: Step Down House Bjil Architecture M.C: BH & CJ Bricklaying Services M: Austral Bricks P: Expressions – Blackstone	51: Clarence Houses Rob Kennon Architects M.C: Project Group M: Nurbrik P: Nurbrik Classic 230 – Chapel Red	54: Kingsway St Nedlands Artique Homes M.C: Artique Homes	11: Rosalie House Owen Architecture M.C: Robson Constructions M: PGH Bricks & Pavers P: Urban Living – Black & Tan	12: Diamantina Designer Diamantina Designer Homes M.C: Diamantina Designer Homes M: Bowral Bricks P: Bowral Bricks – Murray Grey	15: Kate's House Bower Architecture M.C: LBA Construction	17: Brisbane State High School - New Multi-Level Building Project Broad Constructions M: Adbri Masonry P: Paving – Euro Classic	18: Capella Drv Project JA Designs	20: The Vincent Blake Willis Landscape Architects M.C: Austurban Homes M: Midland Brick (WA) P: Custom order	21: East Village Toowoomba Adbri Masonry M.C: Southern Cross Brick Laying M: Adbri Masonry P: Architectural Masonry – Architectural Brick	23: Highfields Sports Complex CKD Architects M.C: Newlands Civil M: Adbri Masonry P: Paving – Euro Stone	24: Marter Private Hospital - Healing Garden Mobility Deck PDT Architects M.C: Dig it M: Adbri Masonry P: Paving – Euro Stone	25: Australian Ballet School MGS Architects M.C: DT Commercial M: Bowral Bricks P: Bowral Bricks – Murray grey – Simmental Silver , Dynasty – Brushed Leather	27: Washington Park Turner Studio M.C: DJD P: Cinajus 'Tuscan Sandstone'.	28: Harbour Mill Project Grimshaw Architects M.C: Aspec Masonry M: Austral Bricks P: Colour Brick – La Palma	29: Athana Residence Arche Design Services M.C: Guy Ward Bricklaying M: Adbri Masonry P: Architectural Masonry - Designer Masonry Honed – Smooth Stone	31: Kingsway St Nedlands Artique Homes M.C: Creative Landscaping P: Fremantle Stone - Charcoal Quartz Gem - 400 x 400 x 60mm	32: Denham 27 Display Home – Rochedale Ausbuild M.C: Ausbuild	33: Wentworth Point Apartment Turner Studio M.C: Lamio	34: City West Housing, Zetland Kann Finch Group M.C: Richard Crookes	35: Sydney 385 Smart Design Studio M.C: Better Brick Services M: Austral Bricks P: Bowral Bricks – Simmental Silver	36: Applecross House Iredale Pedersen Hook Architects M.C: Alistair Adams Tyrone Bricklaying	37: Drury Street House Marc and Co M.C: MCD Constructions M: PGH Bricks & Pavers P: Urban Living – Black & tan	38: Aquinas College Davenport Campbell Zetland M.C: Reitsma M: Adbri Masonry P: Paving – Trupave	40: Saltwater Community Centre Croxon Ramsay M.C: Lawler Bricklaying M: Adbri Masonry P: Paving – Euro Honed, Architectural Masonry – Designer Masonry Honed	41: Surf Lane Walk Way Wall Sutherland Shire Council M.C: Homann Constructions M: Austral Masonry P: GB Split Face – Pebble	42: Oakdale Central - DHL 2B SBA Architects M.C: CLMU	44: 1st Brigade Memorial Australian Army M.C: 23rd Support Squadron- 1st Combat Engineer Regiment M: Boral Masonry P: Split Face – Almond, Smooth Face – Sandune	45: Mildura Townhouse Mark Hooper Designs M.C: Michael Caldwell & Jeff McAlicee	M: Adbri Masonry P: Retaining Wall – Versawall																																																												
KEVIN BORLAND MASONRY AWARD INDEX				M.C: MASONRY CONTRACTOR				M: MANUFACTURER				P: PRODUCT																																																																																						
Winner: Hoddle House Freedman White M.C: Feddersen M: Adbri Masonry P: Architectural Masonry – Architectural Block	M.C: Green Oak Constructions M: Austral Masonry	02: Schlich Home Turco and Associates M.C: Rick Thorn Constructions M: Austral Masonry P: GB Split Face – Pebble	03: N9 17 Danks SJB M.C: MADE Property Group M: Adbri Masonry P: Architectural Masonry - Architectural Block	04: Settlers Rise House Smith Services Mackay M.C: Terry Moohin Blocklaying Mackay M: National Masonry P: Designer Range – Smooth Face - Charcoal	05: Mundy Street Townhouse Padarc M.C: The Domicile Group M: Austral Masonry P: Southern Sawm Face - Riverstone, Southern Smooth – Bluestone	06: Burleigh Project Total Vision Design M.C: Gold Coast Bricklaying M: National Masonry P: Designer Range – Polished Face – Charcoal	07: View St Units Aspect Architecture M.C: Coastal Masonry M: National Masonry P: Designer Range – Split Face – Platinum	08: One 33 Scarborough Hamilton, Hayes, Henderson Architects M.C: Impact Bricklaying M: National Masonry P: Designer Range – Honed face – Charcoal	09: Toowoomba City Library Peddle Thorp Architects M.C: Southern Cross Bricklaying M: National Masonry P: Designer Range – Polished Face - Charcoal	10: High Street Showrooms Peninsula Architects M.C: Cornerstone Building Developments (Qld) M: National Masonry P: Designer Range – Split Face – Almond	11: Forest Hill Police Station Bamford Architecture M.C: Byrnes Construction Group M: Adbri Masonry P: Architectural Masonry -	Designer Masonry Honed	12: Pacific Fair Shopping Centre Alterations and Additions Scentre Design & Construction (Westfield) M.C: Priest & Co Bricklayers M: National Masonry P: Designer Range – Polished Face – Almond	13: Athana Residence Arche Design Services M.C: Guy Ward Bricklaying M: Adbri Masonry P: Architectural Masonry – Designer Masonry Honed - Smooth Stone	14: St.Patricks Primary School College DR4 Coffs Harbour M.C: Commercial Projects Group Port Macquarie M: Adbri Masonry P: Architectural Masonry – Designer Masonry Honed – Smooth Stone	15: House 10 Cottosloe Hofman and Brown Architects M.C: GMH Construction West M: Boral Masonry / Brikmakers P: Boral – Smooth Face – Alabaster / Brikmakers – Stonewash Paving Collection	- Silver	16: Unit Development – Bundoora Malcolm Elliott Architects M.C: MLP Developments M: Adbri Masonry P: Architectural Masonry – Architectural Brick	17: Daylesford Pavilion Victoria Park Allied Design Consultants M.C: K.M Bradley and S.A Taylor M: Adbri Masonry P: Architectural Masonry – Designer Masonry Shortblast	18: 1st Brigade Memorial Australian Army M.C: 23rd Support Squadron- 1st Combat Engineer Regiment M: Boral Masonry P: Split Face - Almond, Smooth Face - Sandune	19: Laneway House spoint9 Architects M.C: Yellow Block Road M: Austral Masonry P: GB Smooth - Nickel	20: Arthur Street House Arch Sign M: Adbri Masonry P: Architectural Masonry - Architectural Brick	21: Mildura Townhouse Mark Hooper Designs M.C: GJB Building M: Adbri Masonry P: Architectural Masonry – Macquarie Stone	22: Defence Housing Australia Lindfield - Precinct 3 Architectus M.C: Conrina Masonry M: Austral Masonry	23: Blacktown Mount Druit Hospital New Clinical Services Building Jacobs M.C: Hanson P: Robinson Facade Systems. Robinson 'Blue Grey Blend' brick snap	24: Murray Bridge Green Shopping Centre Cheesman Architects M.C: Leadwell Project Management M: Boral Masonry P: Split Face - Paperbark	25: Booth Town Houses Peter Davey Building Design M.C: Choice Construction - Brad Choice M: Austral Masonry P: GB Smooth – Porcelain	26: Calvary Christian College Bickerton Masters M.C: Mickle Bricklaying M: Adbri Masonry P: Architectural Masonry - Designer Masonry Honed	27: Terrace house – Little Smith St Fitzroy Suzanne Dance Architect M.C: Longbow Constructions M: National Masonry P: Designer Range – Smooth Face - Charcoal	28: Essendon Residential Home CJ Architects M: Adbri Masonry P: Architectural Masonry – Designer Masonry Honed	34: Cosham St Area Projects M: National Masonry P: Designer Range – Polished Face – Charcoal	35: Balwyn House Jivan Pandey Architects M.C: FWB Bricklaying M: Adbri Masonry P: Architectural Masonry – Designer Masonry Honed	36: Tarneit Station Element architecture M.C: Brickon M: National Masonry P: Designer Range – Honed Face - Charcoal	M: National Masonry P: Designer Range – Smooth Face – Alabaster	32: Solihull Designer Homes M.C: Jim Phillippids M: Austral Masonry P: GB Honed - Pewter	33: Eldersacre 'The Lodge' Wayville Walterbrooke & Associates M.C: Ljp Masonry M: Adbri Masonry P: Architectural Masonry - Designer Masonry Honed	38: Inkerman Rd David Elderman Architects M.C: Chippa Constructions M: National Masonry P: Designer Range – Honed Face – Alabaster	39: North Care Medical Centre Field Labs M.C: All Brick Tasmania M: Adbri Masonry P: Architectural Masonry – Architectural Brick	40: Dunalley Primary School Dunbabin Architects M.C: All brick Tasmania M: Adbri Masonry P: Grey Block – Grey / Coloured and standard blockwork sizes 290 x190mm & 290 x 90mm colour's including Black, Fossil, white, Oatmeal and Grey	41: Brickworks Design Studio Richards & Spence M.C: FTF Bricklaying M: Austral Masonry P: GB Honed - Porcelain – GB	Smooth – Porcelain – GB Split face – Porcelain	42: Mackillop College IDW Architecture and Interiors M.C: Fairbrothers Construction and Joinery M: Adbri Masonry P: Architectural Masonry – Architectural Block / Colour: Oatmeal, White	43: Mona Vale Hospital Community Centre McConnell Smith & Johnson Architect M.C: FB Masonry M: Austral Masonry P: Architectural Block - Alabaster smooth face architectural blocks, 200mm series - Charcoal smooth face architectural blocks, 200mm series	44: Central Reserve, Blackwood Park Outerspace Landscape Architects M.C: Consolidated Landscape Services M: Adbri Masonry P: Architectural Masonry – Designer Masonry Shortblast	M: Boral Roofing P: Shingle – Eclipse	03: Brash Road Project Dane Design Australia M.C: Tobe Tiling M: Wunderlich Terracotta Roof Tiles P: Nullarbor – Delta Sands	04: Applecross Residence Design Wise M.C: TDR M: Bristle Roofing P: Plenum - Blackstone	05: Hilliarys Residence Ryan Cole M.C: AJA Roofing M: Bristle Roofing P: Plenum - Caviar	06: Denham 27 Display Home - Rochedale Ausbuild M.C: Bristle Roofing M: Monier Roofing P: Curvado – R. Nouveau - Sabre	07: Casa dei Sogni (House of Dreams) John Simpson Architect M.C: Jeff Bubeck M: Bristle Roofing P: Curvado - Aitana	08: Granvue Display Urban Space Craft M.C: Bristle Roofing M: Bristle Roofing P: Plenum - Caviar	01: St Francis Xavier Cathedral John Taylor Architect M.C: Pitt Roofing M: Bristle Roofing P: Curvado – Roja	02: Webb Street, Brighton Paolo Pianezze Architect M.C: Ivo Solar	M: Boral Roofing P: Shingle – Eclipse	11: Rangeville Manor John Simpson Architects M.C: Downs Designer Homes M: Bristle Roofing P: Plenum - Blackstone	12: Toorak House M.C: Coghan Roofing M: Monier Roofing P: Nullarbor - Granite	13: Bolingbroke House Faraday Homes M.C: Trade Eze M: Boral Roofing P: French - Sydney Red	14: Serenity Lodge M.C: Five Star Quality Roofing M: Monier Roofing P: Curvado – Hispania	15: Donovans Restaurant Blair Webb & Zemski M.C: Our Home Building M: Bristle Roofing P: Plenum – Slate	16: Miramar House Stuart Osman Building Design M.C: AGC Roof Maintenance M: Boral Roofing P: French - Sunset Red	17: Kellyville Tasmeem M.C: Draycon Building M: Bristle Roofing P: Plenum - Caviar	18: Bonnyrigg Temple Algorry Zappia and Associates M.C: LD Concretors M: Bristle Roofing P: Shingle – Eclipse	27: Mt Vernon Paul Meyer Design	M: Bristle Roofing P: Curvado – Galia	28: Gracemere Grace Robinson Architects M.C: Brett Sullivan M: Bristle Roofing P: Plenum – Oyster	29: Oaksbrook Scott Salisbury Homes M.C: Bristle Roofing M: Bristle Roofing P: Curvado – Slate, La Escandella Plenum Slate	30: Russell Street Residence Stephen Green & Associates M.C: V&G Roofing Ballarat M: Bristle Roofing P: Plenum - Slate	31: Rose Bay Alvaro Bros M.C: Alvaro Bros M: Bristle Roofing P: Curvado – Lucentum - Aitana	32: Western Australian Golf Club McCombie Construction M.C: Dowthwaite M: Bristle Roofing P: Vienna – Graphite	33: Alscher Residence Robert Weir	34: D House Marston Architects	35: Rosalie House Owens Architecture M.C: Robson Constructions M: Recycled Roof Tile P: Reused Tile	36: Marbuck Ave Collins W Collins M.C: Warren Davy Roof Tiling	37: Rothbury House Stibbard Homes M.C: Monier Roofing Specialist M: Monier Roofing P: Cambridge - Soho Night	38: Vogue Homes Vogue Homes M.C: Vogue Homes	39: Shadow House Matt Gibson Architecture + Design	40: Burlington Rd Urban Apartments M.C: Urban Apartments M: Bristle Roofing P: Curvado - Roja	41: Allity Greenwood Gsa Architects	42: Thornton Stuart Everitt Designs M.C: McDonald Jones Homes M: Bristle Roofing P: Plenum – Turren	43: Albert Radium John Campbell Design M.C: Allens Roofing M: Bristle Roofing P: Prestige Smooth - Radium	44: Maudsland House Stuart Osman Building Designs M.C: Country Wide Roofing M: Bristle Roofing P: Prestige Smooth - Tungsten	45: Tandarook House M.C: Dawson Roofing M: Boral Roofing P: Shingle – Eclipse	46: Kingscliffe Haven Mathew Dagg	M: Sharp Shooters P: Prestige Smooth – Tungsten	47: Kingsway St Nedlands Artique Homes M.C: Artique Homes M: Bristle Roofing P: Plenum – Caviar	48: Hamptons House in Brighton Gary McFarlane & Associates M.C: Bayridge Roofing M: Bristle Roofing P: Plenum – Slate	49: Brennan House Schriek Building Group M.C: Monier Roofing M: Monier Roofing P: Cambridge - Soho Night	50: Marsden Park Wisdom Homes M.C: Wisdom Homes M: Bristle Roofing P: Plenum – Turren	51: Glencairn Manor Neo Building Design M.C: Davbuilt M: Bristle Roofing P: Prestige Smooth - Mercury	52: Normandie on Tamborine Home Designs By Vicki M.C: Laurie Hicks M: Bristle Roofing P: Prestige Smooth – Mercury	53: Bam Bam Boo Outlets Design Theory/Webster and Allan JV M.C: Graeme Ashworth M: Boral Roofing P: Vienna – Aniseed	54: Balwyn French Provincial	M: Gembrook Roofing M: Bristle Roofing P: Plenum – Slate	55: Hamptons In Ravenswood Cachet Homes M.C: Roof Top Industries	56: Doris St Spaces Design Group M.C: West Coast Roofing M: Boral Roofing P: Shingle – Eclipse	57: Cressbrook Manor on Hope Stuart Osman Building Design M.C: TKR Constructions M: Bristle Roofing P: Prestige Smooth - Tungsten	58: Glen Iris Extension Brettell Developments M.C: Pristine Roofing M: Bristle Roofing P: Plenum – Slate	59: Bilyana at Balmoral John Cameron Architects M.C: Groove properties M: Bristle Roofing P: Prestige Smooth - Tungsten
BRUCE MACKENZIE LANDSCAPE AWARD INDEX				M.C: MASONRY CONTRACTOR				M: MANUFACTURER				P: PRODUCT																																																																																						
Winner: Kensington Street Turf Design Studio (with Jeffe Agaard Andersen) M.C: Sam the Paving Man M: Bowral Bricks – Bowral Bricks P: Bowral Bricks – Bowral Blue / Austral bricks – Hamlet – Hamlet Blue	Finalist: Bingara Country Club Jane Irwin Landscape Architecture M.C: Daracon M: Austral Bricks / Recycled Bricks / Bowral Bricks P: Austral bricks – Hamlet – Hamlet Blue – Ash – Sepia / Reused / Bowral Bricks – Gettrudis Brown - Bowral Blue	– Murray Grey	Finalist: Earth Sciences Garden, Monash University RushWright Associates M.C: Australian Native Landscape Constructions M: Austral Bricks P: Bowral London - Brahman Granite – Chestnut – Maple – Regency Grey – Silver Sand	Finalist: UTS Alumni Green Aspect Studios M.C: Regal Innovations / Sam the Paving Man M: Austral Bricks P: Pbbblecrete 300 x 600mm concrete standard format paver / Pbbblecrete 5-sided custom concrete paver designed by Aspect Studios	Finalist: Central Reserve, Blackwood Park Outerspace Landscape Architects M.C: Consolidated Landscape Services M: Adbri Masonry P: Architectural Masonry – Designer Masonry Shortblast	01: Brighton Residence Pleyzier Perkins	M.C: Visioneer Builders M: Austral Bricks P: Austral Bricks Purpose Made Commons (PMC) - PMC 76 1sts	03: Three Follies Bush M.C: Stuart Burke M: Recycled Brick P: Reused Brick	05: Camp Hill Terrace Dan Young Landscape Architect M.C: Dan Young Landscape Architect M: PGH Bricks & Pavers P: Urban Living – Black & Tan	06: Mary Street Piazza Place Laboratory M.C: Le Grove Landscaping M: Austral Bricks	P: Burlesque – Luscious Red – Azure	07: Bardon Garden House Arcke M.C: Natural Lifestyle Homes M: Lincoln Brickworks / Recycled P: Lincoln Brickworks - Hand Crafted Heritage Bricks - Brick Used - "McKinlay Grey" Standard Brick / Reused Brick	08: Bourke St Stage 2 Upgrade Waterloo City of Sydney M.C: CK Paving M: Adbri Masonry P: Paving – Euro Honed	09: Wollongong Private Hospital M.C: A W Edwards M: Adbri Masonry	10: Bourke St Stage 2 Upgrade Waterloo City of Sydney M.C: CK Paving M: Adbri Masonry P: Paving – Euro Honed	09: Wollongong Private Hospital M.C: A W Edwards M: Adbri Masonry	10: Bourke St Stage 2 Upgrade Waterloo City of Sydney M.C: CK Paving M: Adbri Masonry P: Paving – Euro Honed	09: Wollongong Private Hospital M.C: A W Edwards M: Adbri Masonry	10: Bourke St Stage 2 Upgrade Waterloo City of Sydney M.C: CK Paving M: Adbri Masonry P: Paving – Euro Honed	09: Wollongong Private Hospital M.C: A W Edwards M: Adbri Masonry	10: Bourke St Stage 2 Upgrade Waterloo City of Sydney M.C: CK Paving M: Adbri Masonry P: Paving – Euro Honed	09: Wollongong Private Hospital M.C: A W Edwards M: Adbri Masonry	10: Bourke St Stage 2 Upgrade Waterloo City of Sydney M.C: CK Paving M: Adbri Masonry P: Paving – Euro Honed	09: Wollongong Private Hospital M.C: A W Edwards M: Adbri Masonry	10: Bourke St Stage 2 Upgrade Waterloo City of Sydney M.C: CK Paving M: Adbri Masonry P: Paving – Euro Honed	09: Wollongong Private Hospital M.C: A W Edwards M: Adbri Masonry	10: Bourke St Stage 2 Upgrade Waterloo City of Sydney M.C: CK Paving M: Adbri Masonry P: Paving – Euro Honed	09: Wollongong Private Hospital M.C: A W Edwards M: Adbri Masonry	10: Bourke St Stage 2 Upgrade Waterloo City of Sydney M.C: CK Paving M: Adbri Masonry P: Paving – Euro Honed	09: Wollongong Private Hospital M.C: A W Edwards M: Adbri Masonry	10: Bourke St Stage 2 Upgrade Waterloo City of Sydney M.C: CK Paving M: Adbri Masonry P: Paving – Euro Honed	09: Wollongong Private Hospital M.C: A W Edwards M: Adbri Masonry	10: Bourke St Stage 2 Upgrade Waterloo City of Sydney M.C: CK Paving M: Adbri Masonry P: Paving – Euro Honed	09: Wollongong Private Hospital M.C: A W Edwards M: Adbri Masonry	10: Bourke St Stage 2 Upgrade Waterloo City of Sydney M.C: CK Paving M: Adbri Masonry P: Paving – Euro Honed	09: Wollongong Private																																																														



NATIONAL MEMBERS



Austral Bricks
www.australbricks.com.au



PGH Bricks & Pavers™
www.pghbricks.com.au

STATE MEMBERS



Brikmakers
www.brikmakers.com



Midland Brick
www.midlandbrick.com.au

REGIONAL MEMBERS



Bowral Bricks
www.bowralbricks.com.au



Daniel Robertson Australia
www.danielrobertson.com.au



Krause Bricks
www.krausebricks.com.au



SPONSORING MEMBERS



Adbri Masonry
www.adbrimasonry.com.au



Austral Masonry
www.australmasonry.com.au

STATE MEMBERS



Boral Masonry
www.boral.com.au



Brikmakers
www.brikmakers.com



National Masonry
www.nationalmasonry.com.au



A BORAL COMPANY
Midland Brick
www.midlandbrick.com.au

ASSOCIATES



ACP Hardstand Solutions
www.acphardstand.com



Lanxess
www.lanxess.com.au



Cathay Industries
www.cathayindustries.com.au



NATIONAL MEMBERS



Bristile Roofing
www.bristilerooting.com.au



Boral Roofing
www.boral.com.au



Monier
www.monier.com.au

STATE MEMBERS



Alice Roof Tiles
www.alicerooftiles.com.au



Harmony Roof Tiles
www.harmonyrooftiles.com.au



Monier Prime
www.monierprime.com.au

